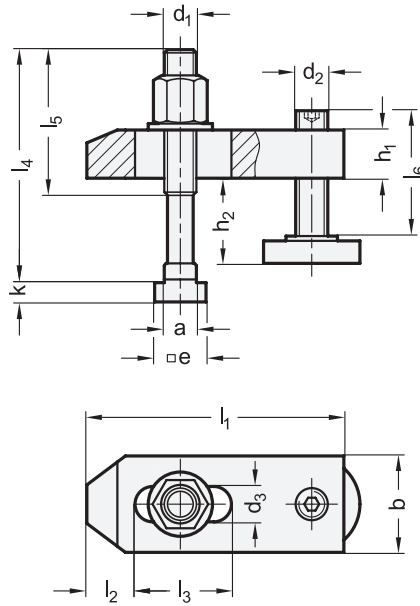


NO. 6314 V Adjustable Plain Clamps

Steel, with T-Slot Bolt



5 Type
B With clamping bolt

Metric table

Dimensions in: millimeters - inches

1 a Table slot size	2 d ₃ Clamp slot size	3 l ₁	4 l ₆	b	d ₁ Thread	d ₂ Thread	□ e	h ₁	h ₂ min. - max.	k	l ₂	l ₃	l ₄	l ₅
10 0.39	11 0.43	80 3.15	39 1.54	30 1.18	M 10	M 10	15 0.59	15 0.59	8 - 32	6 0.24	15 0.59	30 1.18	80 3.15	50 1.97
12 0.47	14 0.55	100 3.94	49 1.93	40 1.57	M 12	M 12	18 0.71	20 0.79	10 - 40	7 0.28	21 0.83	40 1.57	100 3.94	65 2.56
12 0.47	14 0.55	100 3.94	94 3.70	40 1.57	M 12	M 12	18 0.71	20 0.79	24 - 92	7 0.28	21 0.83	40 1.57	160 6.30	65 2.56
14 0.55	14 0.55	100 3.94	49 1.93	40 1.57	M 12	M 12	22 0.87	20 0.79	10 - 38	8 0.31	21 0.83	40 1.57	100 3.94	65 2.56
14 0.55	14 0.55	100 3.94	94 3.70	40 1.57	M 12	M 12	22 0.87	20 0.79	23 - 92	8 0.31	21 0.83	40 1.57	160 6.30	65 2.56
16 0.63	18 0.71	125 4.92	55 2.17	50 1.97	M 16	M 16	25 0.98	25 0.98	13 - 48	9 0.35	26 1.02	45 1.77	125 4.92	85 3.35
16 0.63	18 0.71	125 4.92	90 3.54	50 1.97	M 16	M 16	25 0.98	25 0.98	15 - 83	9 0.35	26 1.02	45 1.77	160 6.30	85 3.35
18 0.71	18 0.71	125 4.92	55 2.17	50 1.97	M 16	M 16	28 1.10	25 0.98	13 - 46	10 0.39	26 1.02	45 1.77	125 4.92	85 3.35
18 0.71	18 0.71	125 4.92	90 3.54	50 1.97	M 16	M 16	28 1.10	25 0.98	13 - 81	10 0.39	26 1.02	45 1.77	160 6.30	85 3.35
22 0.87	22 0.87	160 6.30	69 2.72	60 2.36	M 20	M 20	35 1.38	30 1.18	16 - 65	14 0.55	30 1.18	60 2.36	160 6.30	110 4.33

Specification

- Plain clamp
Tempered steel, lacquer painted finish
- T-slot bolt DIN 787
Forged steel
- Milled T-slot guide faces and rolled thread
- Property class 8.8
- Knurled adjusting screw
Steel
- Hardened
- Property class 8.8
- *Strength Values of Screws* → page 2127
- **RoHS compliant**

Accessory

- T-slot nut DIN 508 → page 1222
- Double-ended threaded stud DIN 6379
→ page 1227

Information

No. 6314 V adjustable plain clamps are particularly suitable for clamping low height workpieces. The clamping height can be adjusted by means of the adjusting screw (knurled or socket head positions).

Adjusting screw, T-slot bolt, washer and fixture nut are included as part of the assembly.

see also...

- *Adjustable Plain Clamps NO. 6314 V (without T-Slot Bolt)* → page 740
- *Plain Clamps DIN 6314* → page 742

How to order

1	Table slot size a
2	Clamp slot size d ₃
3	Length l ₁
4	Length l ₆
5	Type

NO. 6314V-14-14-100-94-B