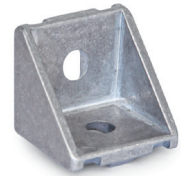


Assembly sets:  
 2x roll-in T-slot nut GN 506  
 2x socket button head screw ISO 7380

Metric



##### 5 Type

- A** Without assembly set, without cover cap  
**B** With assembly set, with cover cap  
**C** With assembly set, without cover cap

## Metric table

1		2	3	4	Dimensions in: millimeters - <i>inches</i>						
b		n	l <sub>1</sub>	l <sub>2</sub>	d	h	l <sub>3</sub>	l <sub>4</sub>	l <sub>5</sub>	s	
Nominal dimension	Actual dimension										
30 <i>1.18</i>	28 <i>1.10</i>	6 <i>0.24</i>	30 <i>1.18</i>	30 <i>1.18</i>	6.3 <i>0.25</i>	2.6 <i>0.10</i>	3 <i>0.12</i>	15 <i>0.59</i>	6.8 <i>0.27</i>	5.9 <i>0.23</i>	
40 <i>1.57</i>	38 <i>1.50</i>	8 <i>0.31</i>	40 <i>1.57</i>	40 <i>1.57</i>	8.5 <i>0.33</i>	4.1 <i>0.16</i>	4 <i>0.16</i>	20 <i>0.79</i>	7.2 <i>0.28</i>	5.6 <i>0.22</i>	

## Specification

- Angle bracket
    - Aluminum
    - Die-cast
    - Matte, tumbled finish
    - Powder coated
      - Black, RAL 9005, textured finish
      - Silver, RAL 9006, textured finish
  - Roll-in T-slot nut GN 506
    - Steel
    - Zinc plated, blue passivated finish
  - Socket button head screw ISO 7380
    - Steel
    - Zinc plated, blue passivated finish
  - Cover cap
    - Plastic
    - Technopolymer (Polyamide PA)
    - Black, matte finish
- Plastic Characteristics → page QVX
- RoHS compliant

6

## Information

To mount GN 961 angle brackets in place, first insert the nuts of the assembly sets into the profile slot, then mount the angle bracket with the socket button head screw. The guide step of the nut will position them in parallel and centered to the slot; the spring element prevents inadvertent sliding.

For crossing profiles or when using the angle brackets with components without a slot, the removable guide steps can simply be snapped off.

After assembly, the cover caps are snapped into place via four lugs. They give the angle brackets an attractive appearance and protect against dirt.

Even after repeated use, the cover caps will remain firmly attached to the angle brackets, thanks to the elastic snap-type lugs. If required, they are also available individually under standard GN 963.

see also...

- Roll-In T-Slot Nuts GN 506 → page QVX

## Accessory

- Cover caps GN 963 → page QVX

### How to order

1 2 3 4 5 6  
**GN 961-30-6-30-30-B-MT**

- |   |                       |
|---|-----------------------|
| 1 | Width b               |
| 2 | Slot width n          |
| 3 | Length l <sub>1</sub> |
| 4 | Length l <sub>2</sub> |
| 5 | Type                  |
| 6 | Finish                |