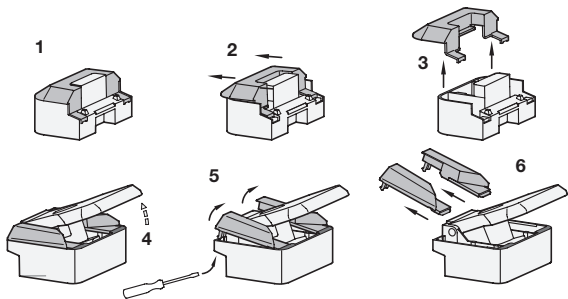


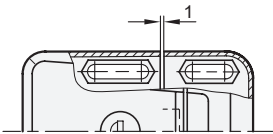
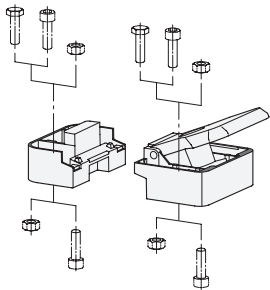
Assembly instruction



Prior to installation, remove the slam latch cover as shown in the sketch. Socket cap screws DIN 912, hex head screws DIN 933 and hex nuts ISO 4032 each with thread size M 6 can be used for mounting the slam latch.

After installation the covers are reassembled in reverse order. The covers cannot be removed when the slam latch is closed and consequently protect against vandalism.

The elongated holes allow the slam latch to be mounted to the door frame or profile systems both from the operating side and from the rear. The installation clearance of 1 mm is also easy to adjust.



Application example

