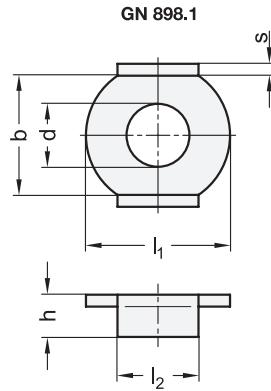
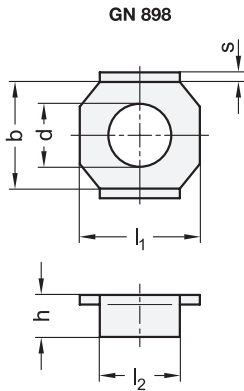
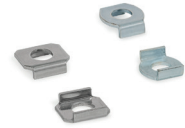
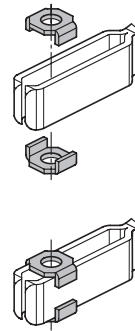


Metric



Assembly instruction



Metric table



Dimensions in: millimeters / inches

GN 898			b	h	l ₁	l ₂	s	For toggle clamps			
Nominal size		Actual dimension						GN 810	GN 812	GN 820	GN 820.6
Steel	Stainless steel							GN 810.1 GN 810.3 GN 810.4 GN 812.1		GN 820.1 GN 820.3 GN 820.4	
4 0.16	4 0.16	4.3 0.17	7.2 0.28	2.5 0.10	9 0.35	5 0.20	0.8 0.03	-	-	25	-
5 0.20	5 0.20	5.5 0.22	9.8 0.39	3.5 0.14	12 0.47	7.5 0.30	1 0.04	75	-	75	80
6 0.24	6 0.24	6.5 0.26	11.8 0.46	4.5 0.18	15 0.59	9 0.35	1.2 0.05	13	-	130	-
8 0.31	8 0.31	8.5 0.33	15 0.59	5.5 0.22	18 0.71	12.5 0.49	1.5 0.06	23	200	230	140
10 0.39	10 0.39	10.5 0.41	18 0.71	6 0.24	23 0.91	16.5 0.65	2 0.08	330	300	355	250
12 0.47	-	13 0.51	24 0.94	7 0.28	30 1.18	18 0.71	2.5 0.10	430 / 530	-	455	-



Dimensions in: millimeters / inches

GN 898.1			b	h	l ₁	l ₂	s	For toggle clamps
Nominal size		Actual dimension						GN 810.10 GN 810.11
6 0.24	6 0.24	6.5 0.26						12.5 0.49
10 0.39	10 0.39	10.5 0.41	20.5 0.81	6.9 0.27	22 0.87	14 0.55	2 0.08	440

Specification

GN 898

- Steel, zinc plated, blue passivated finish
- Stainless steel AISI 304

ST
NI

GN 898.1

Steel, zinc plated, blue passivated finish

ST

RoHS

Technical Information

Stainless Steel Characteristics

Page

QVX

Flanged washers GN 898 and GN 898.1 are used to attach and position pressure elements on toggle clamps with open clamping arm. The corresponding toggle clamps are listed in the table.

see also...

GN 810 Vertical Acting Toggle Clamps

GN 820 Horizontal Acting Toggle Clamps

Page

QVX

QVX

How to order

GN 898-5-NI

1 Diameter d

2 Material

How to order

GN 898.1-10-ST

1 Diameter d

2 Material

1.1
1.2
1.3
1.4
2.1
2.2
2.3
2.4

