

- 2 Type**
SP Body in forged steel
- 3 Coding**
M Magnetic piston

Metric table



Dimensions in: millimeters - inches

Size	F _H Holding capacity	F _S Clamping force at 6 bar ≈	a	b ₁	b ₂	d ₁	d ₂	d ₃	d ₄ Compressed air connections	Inside Ø connection tube	h
70	1200 N 270 lbf	780 N 175 lbf	13.5 0.53	42 1.65	64 2.52	8.5 0.33	M 6	4.3 0.17	M 5	4 0.16	50 1.97
360	5600 N 1259 lbf	1290 N 290 lbf	27.5 1.08	55 2.17	90 3.54	12 0.47	M 8	5.5 0.22	G 1/8	4 0.16	69 2.72
1100	16000 N 3597 lbf	4480 N 1007 lbf	28 1.10	66 2.60	133 5.24	16 0.63	M 10	8.5 0.33	G 1/4	6 0.24	85 3.35
2100	25000 N 5620 lbf	5520 N 1241 lbf	38.5 1.52	80 3.15	177 6.97	20 0.79	M 12	8.5 0.33	G 1/4	8 0.31	96.5 3.80

Size	l ₁	l ₂	l ₃	l ₄	m ₁	m ₂	m ₃	m ₄	s ≈	t	w Stroke
70	163 6.42	78.5 3.09	20 0.79	70 2.76	26 1.02	13 0.51	26 1.02	-	7.5 0.30	12 0.47	12 0.47
360	274 10.79	113 4.45	32 1.26	94 3.70	33.5 1.32	30 1.18	36.5 1.44	-	9.5 0.37	15 0.59	21 0.83
1100	361 14.21	171 6.73	49 1.93	138 5.43	41 1.61	15 0.59	35 1.38	41 1.61	11 0.43	18 0.71	31 1.22
2100	482 18.98	222 8.74	61.5 2.42	190 7.48	50 1.97	35 1.38	50 1.97	50 1.97	13.5 0.53	22 0.87	45 1.77

Specification

- Body
Steel
 - Forged
 - Chemically blackened finish
- Parts in sheet metal
Case-hardened steel C10
Zinc plated, blue passivated finish
- Tapped connecting rod
Steel St 37
Zinc plated, blue passivated finish
- Case-hardened bearing pins (Bearing rivets)
- Double-action air cylinder
Max. pressure 6 bar
- RoHS compliant

Accessory

- Sensor GN 3380 → page 888

Information

The working principle of the GN 890 pneumatic toggle clamps is identical in construction and dimensions to the GN 842 manual toggle clamps.

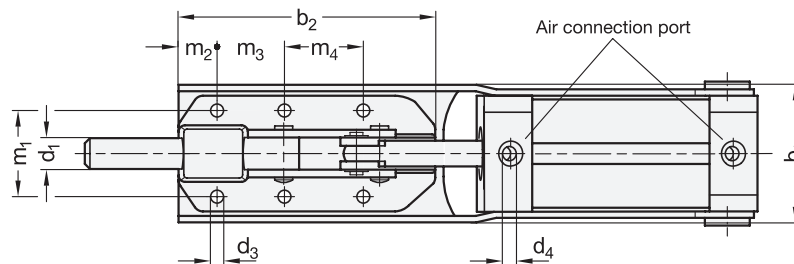
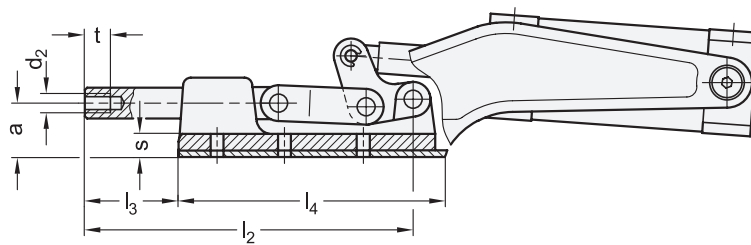
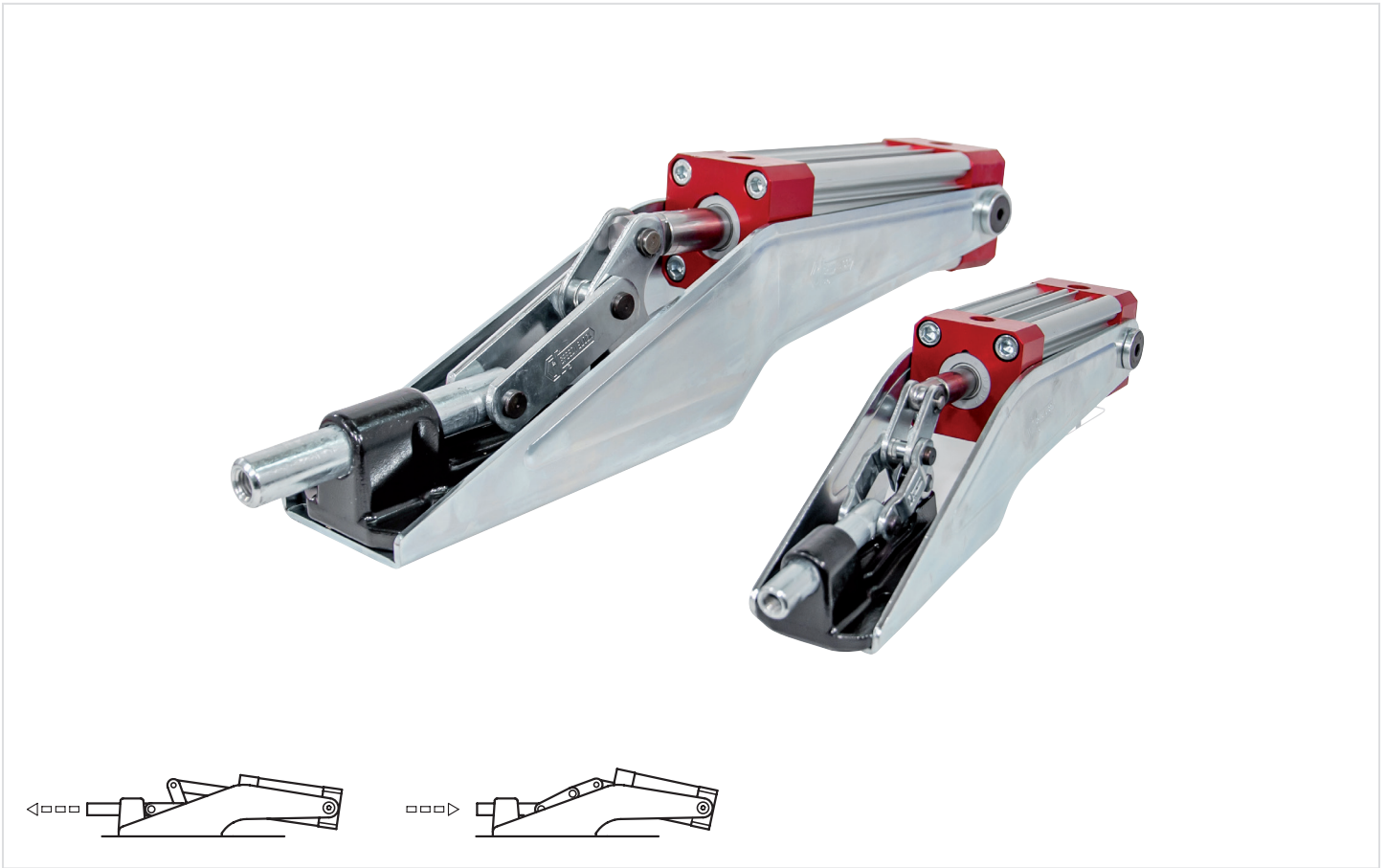
To ensure an extended life of the mechanical parts as well as the air cylinders, the operating pressure should not exceed 6 bar and a compressed air maintenance unit should be installed upstream. In addition a lubrication control unit should be mounted in the air in-feed line. The sturdy mounting frame for the cylinder has been designed to avoid the trunions of the cylinder to protruding over the frame.

GN 890 toggle clamps have a permanent magnet integrated into the piston. In conjunction with GN 3380 sensors, it is possible to detect the piston position, which can deliver a signal, for instance to a machine controller.

see also...

- List of Pneumatic Clamps → page 834

<p>How to order</p> <p>GN 890-360-SP-M</p>	<table style="width: 100%; border-collapse: collapse;"> <tr> <td style="width: 20px; text-align: center;">1</td> <td>Size</td> </tr> <tr> <td style="text-align: center;">2</td> <td>Type</td> </tr> <tr> <td style="text-align: center;">3</td> <td>Coding</td> </tr> </table>	1	Size	2	Type	3	Coding
1	Size						
2	Type						
3	Coding						



1.1

1.2

1.3

1.4

2.1

2.2

2.3

2.4

