

2 Type
BC 2 vertical clamping arms for centered clamping

Metric table



Dimensions in: millimeters - inches

Size (Piston Ø)	Max. clamping moment in Nm at 6 bar	F _S Clamping force at r at 6 bar	F _H Holding capacity at r at 6 bar	a	b -0.2	d ₁ h8	d ₂	d ₃ H8	d ₄	d ₅	l ₁ -0.5	l ₂ -0.5
20	60	630 N 142 lbf	1150 N 259 lbf	21 0.83	10 0.394	28 1.102	M 5	7 0.276	4.1 0.16	M 5	138 5.43	160 6.30
32	150	1110 N 250 lbf	1520 N 342 lbf	31 1.22	12 0.472	40 1.575	M 6	9 0.354	5 0.20	G 1/8	206 8.11	237 9.33
40	300	1800 N 405 lbf	2000 N 450 lbf	37 1.46	16 0.630	50 1.969	M 8	11 0.433	6.8 0.27	G 1/8	244 9.61	282 11.10

Size (Piston-Ø)	l ₄	l ₅	l ₆ ≈	m ₁ ±0.01	m ₂	m ₃ ±0.01	m ₄	m ₅ ±0.01	m ₆	r	s ₁	s ₂	t	w Angle in °
20	24.5 0.96	5 0.20	89 3.50	12 0.4724	7.5 0.30	17 0.6693	-	22 0.8661	13 0.51	48 1.89	32 1.26	38 1.50	13 0.51	66°
32	31 1.22	6 0.24	72.5 2.85	18 0.7087	10 0.39	25 0.9843	51 2.01	30 1.1811	22 0.87	67.5 2.66	42 1.65	42 1.65	15 0.59	14°
40	38 1.50	7.5 0.30	89.5 3.52	22 0.8661	13 0.51	30 1.1811	62 2.44	37 1.4567	25 0.98	82.5 3.25	52 2.05	52 2.05	18 0.71	14°

Specification



- Clamp Steel C45 Chemically nickel plated **NC**
- Max. pressure 10 bar
- ISO-Fundamental Tolerances → page QVX
- RoHS compliant

On request

- With nonstick coating for protection against welding spray and corrosion

Information

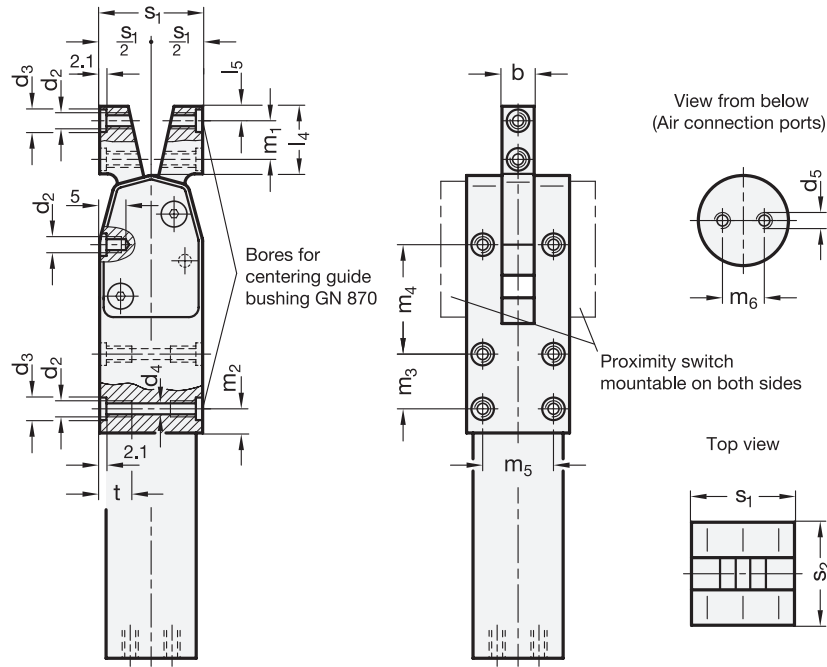
The clamping forces F_S of GN 866 pneumatic fastening clamps are directed inwards at the clamping arms.

The maximum clamping moment is reached once the clamping arm is at the end of its stroke. For this reason the working stroke should be completed as closely as possible to the stroke end.

see also...

- List of Pneumatic Clamps → page QVX
- Operating Principle / Mounting Methods → page QVX
- Centering Guide Bushings GN 870 → page QVX
- Sensors GN 893.1 / GN 893.2 / GN 893.3 / GN 893.4 → page QVX
- Single Post Coupling / Y-Coupling Accessories GN 867 → page QVX

<p>How to order</p> <p>GN 866-20-BC-NC</p>	1	Size
	2	Type
	3	Finish



Installation examples

Principle of operation

