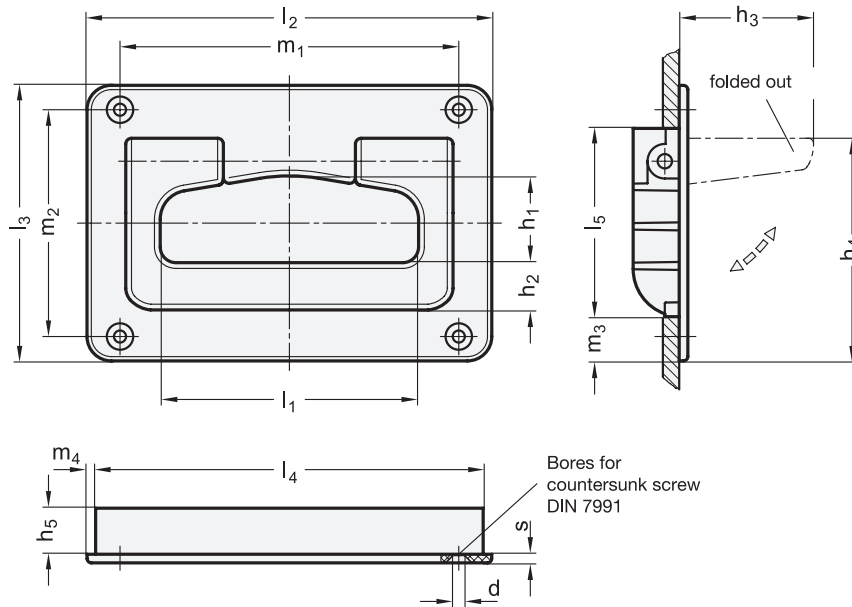


# EN 825.2 Folding Handles with Recessed Tray

Technopolymer Plastic, with Spring-Loaded Return



## Metric table



Dimensions in: millimeters - inches

$l_1$	$d$	$h_1$	$h_2$	$h_3$	$h_4$	$h_5$	$l_2$	$l_3$	$l_4$	$l_5$	$m_1 \pm 0.1$	$m_2 \pm 0.1$	$m_3$	$m_4$	$s$
90 3.54	4.2 0.17	29 1.14	16.5 0.65	47 1.85	77 3.03	16 0.63	141 5.55	96 3.78	135 5.31	65 2.56	118 4.646	79 3.110	16 0.63	3 0.12	3 0.12
105 4.13	5.2 0.20	43 1.69	17 0.67	60 2.36	95 3.74	18 0.71	167 6.57	116 4.57	158 6.22	86 3.39	141 5.551	98 3.858	15 0.59	4.5 0.18	3 0.12

## Specification



- Plastic  
Technopolymer (Polyamide PA)  
- Glass fiber reinforced  
- Temperature resistant up to 212 °F (100 °C)
- Color (matte finish):  
Black, RAL 9005  **SW**  
Gray, RAL 7040  **GR**  
White, RAL 9002  **WS**
- Pin  
Stainless steel AISI 303
- Return spring  
Stainless steel AISI 302
- *Strength Values* → page QVX
- *Stainless Steel Characteristics* → page QVX
- *Plastic Characteristics* → page QVX
- **RoHS compliant**

## On request

- Various metric size fasteners and kit packaging

## Information

EN 825.2 folding handles with recessed tray are used if the handle is to protrude by a maximum of 3 mm when folded down. After releasing the handle, it returns to its starting position by spring-loaded return.

see also...

- *Folding Handles with Recessed Tray GN 425.8 (with Locking or Spring-Loaded Return)* → page QVX
- *Folding Handles EN 825.1 (Technopolymer Plastic, with Spring-Loaded Return)* → page QVX

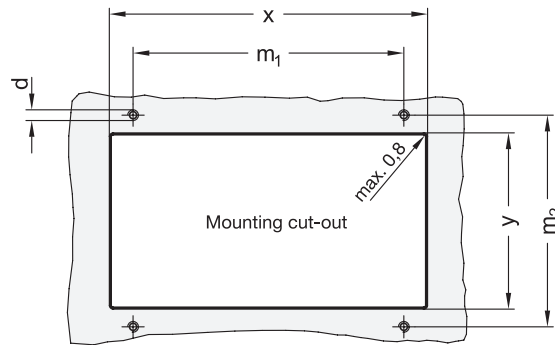
How to order

**EN 825.2-90-SW**

- 1 Length  $l_1$
- 2 Color



**Installation dimensions**



Dimensions in: millimeters - inches

for l <sub>1</sub> = 90					for l <sub>1</sub> = 105				
d	x +0.2	y +0.2	m <sub>1</sub> ±0.1	m <sub>2</sub> ±0.1	d	x -0.2	y -0.2	m <sub>1</sub> ±0.1	m <sub>2</sub> ±0.1
M 4	135 5.315	65 2.559	118 4.646	79 3.110	M 5	158 6.221	86 3.386	141 5.551	98 3.858

