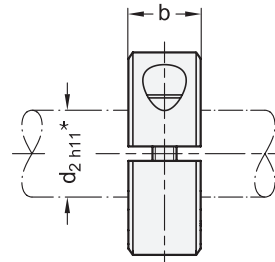
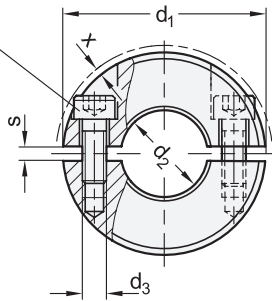
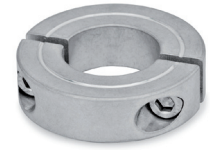


Socket cap screw
DIN 912



* recommended diameter tolerance


Metric



SS Stainless Steel

Metric table

Dimensions in: millimeters - inches

1 d ₁	2 d ₂		AL: H10 A4: E8		b ±0.2	d ₃	s		x ≈ Max. protrusion of screw head	Part number adjustable lever for d ₃ 
	ST / NI: H10	B	B	B			ST / NI / AL	A4		
16 0.63	B 4	B 5	-	-	9 0.35	M 3	2.1 0.08	-	1.2 0.05	-
20 0.79	B 6	-	B 6	-	9 0.35	M 3	2.1 0.08	1.6 0.06	1.2 0.05	-
22 0.87	B 8	-	B 8	-	9 0.35	M 3	2.1 0.08	1.6 0.06	1 0.04	-
26 1.02	B 10	-	B 10	-	11 0.43	M 4	2.1 0.08	1.6 0.06	1.6 0.06	-
30 1.18	B 12	-	B 12	-	11 0.43	M 4	2.1 0.08	1.6 0.06	0.7 0.03	GN 311-30-M4-12-SW
32 1.26	B 14	-	B 14	-	11 0.43	M 4	2.1 0.08	1.6 0.06	0.7 0.03	GN 311-30-M4-12-SW
36 1.42	B 15	B 16	B 15	B 16	13 0.51	M 5	2.1 0.08	1.6 0.06	1.4 0.06	GN 311-30-M5-13-SW
42 1.65	B 18	B 20	B 18	B 20	15 0.59	M 5	3 0.12	1.6 0.06	0.6 0.02	GN 311-30-M5-15-SW
48 1.89	B 22	B 25	B 22	B 25	15 0.59	M 5	3 0.12	1.6 0.06	0 0	GN 311-45-M5-16-SW
55 2.17	B 28	B 30	B 28	B 30	15 0.59	M 6	3 0.12	1.6 0.06	0.5 0.02	GN 311-45-M6-18-SW
60 2.36	B 32	B 35	B 32	B 35	15 0.59	M 6	4 0.16	1.6 0.06	0.4 0.02	GN 311-45-M6-19-SW
65 2.56	B 40	-	B 40	-	15 0.59	M 6	4 0.16	1.6 0.06	0.5 0.02	GN 311-45-M6-20-SW

Specification

- Steel body **ST**
 - Sintered (Distaloy AB)
 - Black steam oxidized
 - Socket cap screw DIN 912
 - Steel, plain finish
 - Stainless steel body **NI**
 - Sintered, AISI 316LHC
 - Socket cap screw DIN 912
 - Stainless steel A2
 - Turned, AISI 316 **A4**
 - Weldable
 - Socket cap screw DIN 912
 - Stainless steel A4
 - Aluminum body **AL**
 - Turned, tumbled
 - Socket cap screw DIN 912
 - Stainless steel A2
- RoHS compliant

Information

GN 707.2 split shaft collars correspond dimensionally to the GN 706.2 semi-split set collars and are used when the collar cannot be slipped over a shaft.

These split shaft collars are typically used as an end stop, and can easily be assembled with a high clamping force via the clamping screw without causing damage to the surface of the shaft or axle.

For sizes d₁ = 16 to 36 mm, d₃ is a tapped through hole; for sizes d₁ = 42 mm and larger, d₃ is a tapped blind hole.

see also...

- Split Shaft Collars GN 7072.1 (Stainless Steel, with Tapped Attachment Holes) → page 1215
- Split Shaft Collars GN 7072.2 (Stainless Steel, with Mounting Holes) → page 1216
- Split Shaft Collars GN 7072.3 (Stainless Steel, with Damping Washer) → page 1217
- Split Shaft Collars EN 707.5 (Plastic) → www.jwwinco.com

How to order

1 2 3
GN 707.2-22-B8-ST

- 1 Outer diameter d₁
- 2 Bore d₂
- 3 Material