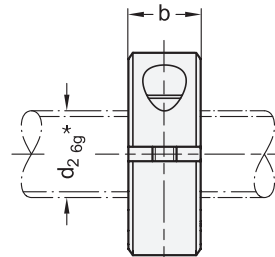
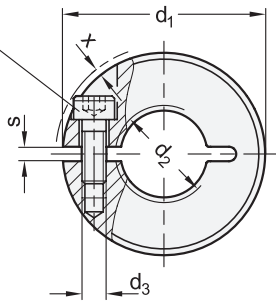


Socket cap screw  
DIN 912




\* recommended diameter tolerance



SS Stainless Steel

**Metric table**

Dimensions in: millimeters - inches

<b>d<sub>1</sub></b>	<b>d<sub>2</sub> 6H</b>		<b>b ±0.2</b>	<b>d<sub>3</sub></b>	<b>s</b>	<b>x ≈</b> Max. protrusion of screw head	Part number adjustable lever for d <sub>3</sub> 
20 0.79	M 8	M 8 x 1	9 0.35	M 3	2.1 0.08	1 0.04	-
22 0.87	M 10	M 10 x 1	9 0.35	M 3	2.1 0.08	0.8 0.03	-
26 1.02	M 12	M 12 x 1.5	11 0.43	M 4	2.1 0.08	1.6 0.06	-
32 1.26	M 16	M 16 x 1.5	11 0.43	M 4	2.1 0.08	0.7 0.03	GN 311-30-M4-12-SW
42 1.65	M 20	M 20 x 1.5	15 0.59	M 5	3 0.12	0.6 0.02	GN 311-30-M5-15-SW
48 1.89	-	M 24 x 1.5	15 0.59	M 5	3 0.12	0 0	GN 311-45-M5-16-SW
55 2.17	-	M 30 x 1.5	15 0.59	M 6	3 0.12	0.4 0.02	GN 311-45-M6-18-SW

**Specification**

- Steel **ST**
  - Body Steel, sintered Black steam oxidized
  - Socket cap screw DIN 912 Steel, plain finish
- Stainless steel **NI**
  - Body Stainless steel AISI 316LHC Sintered
  - Socket cap screw DIN 912 Stainless steel AISI 304
- Metric ISO Thread → page QVX
- Metric ISO Fine Pitch Thread → page QVX
- Stainless Steel Characteristics → page QVX
- RoHS compliant

**Information**

The outer dimensions of GN 706.3 threaded shaft collars correspond to the GN 706.2 semi-split shaft collars. However, the bore is tapped so that the shaft collar can be screwed on like a nut, for example to a threaded spindle in order to limit the adjustment range or the screw-in depth. Threaded shaft collars are clamped by reducing the slot height via the socket cap screw without damaging the thread on the spindle.

The GN 311 series adjustable lever is a great option for tool-free clamping.

For sizes d<sub>1</sub> = 20 to 32 mm, d<sub>3</sub> is a tapped through hole; for sizes d<sub>1</sub> = 42 mm and larger, d<sub>3</sub> is a tapped blind hole.

see also...

- List of Shaft Collar Types → page QVX
- Semi-Split Shaft Collars GN 706.2 → page QVX

**Accessory**

- Adjustable levers GN 311 → page QVX
- Damping washers GN 7062.30 → page QVX

How to order	1	Outer diameter d <sub>1</sub>
<b>GN 706.3-42-M20x1.5-NI</b>	2	Thread d <sub>2</sub>
	3	Material