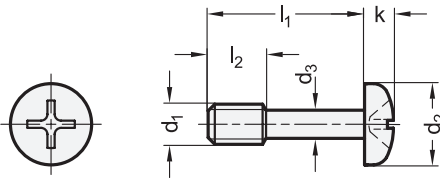
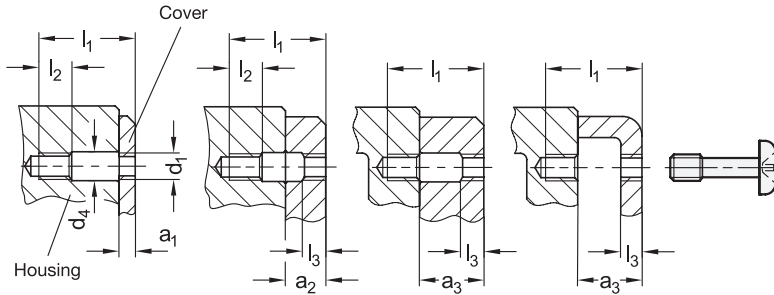


Metric



Assembly options



SS Stainless Steel

Metric table

Dimensions in: millimeters / inches

¹ d ₁	² l ₁	a ₁	a ₂	a ₃	d ₂	d ₃ -0.3	d ₄	k	l ₂	l ₃	Phillips drive
M 3	12 0.47	1.5-3	3-6.5	6.5-8	5.5 0.22	2.2 0.087	3.5 0.14	2 0.08	4 0.16	1.5 0.06	PH 2
M 3	16 0.63	3-7	7-8	8-12	5.5 0.22	2.2 0.087	3.5 0.14	2 0.08	4 0.16	1.5 0.06	PH 2
M 4	16 0.63	2-5	5-8	8-11	7 0.28	3 0.118	4.5 0.18	2.6 0.10	5 0.20	2 0.08	PH 2
M 4	20 0.79	5-9	9-11	11-15	7 0.28	3 0.118	4.5 0.18	2.6 0.10	5 0.20	2 0.08	PH 2
M 5	20 0.79	2.5-6	6-10.5	10.5-14	9 0.35	3.9 0.154	5.5 0.22	3.3 0.13	6 0.24	2.5 0.10	PH 2
M 5	25 0.98	6-11	11-14	14-19	9 0.35	3.9 0.154	5.5 0.22	3.3 0.13	6 0.24	2.5 0.10	PH 2
M 6	25 0.98	3-7	7-13	13-17	10.5 0.41	4.6 0.181	6.5 0.26	3.9 0.15	8 0.31	3 0.12	PH 3
M 6	30 1.18	7-12	12-17	17-22	10.5 0.41	4.6 0.181	6.5 0.26	3.9 0.15	8 0.31	3 0.12	PH 3
M 8	30 1.18	4-8	8-16	16-20	14 0.55	6.3 0.248	8.5 0.33	5.2 0.20	10 0.39	4 0.16	PH 3
M 8	35 1.38	8-13	13-20	20-25	14 0.55	6.3 0.248	8.5 0.33	5.2 0.20	10 0.39	4 0.16	PH 3
M 8	40 1.57	13-18	18-25	25-30	14 0.55	6.3 0.248	8.5 0.33	5.2 0.20	10 0.39	4 0.16	PH 3

Specification

Stainless steel AISI 304 (A2-50)

³ NI

RoHS

Pan head screws GN 7045.2 feature a recessed stud d₃, making it easy to secure them against loss, such as in a cover.

Thus the “captivity of the mounting element” according to the Machinery Directive 2006 / 42 / EG is given.

For this purpose, instead of a normal through / threaded hole a thread d₁ on both sides, if necessary with a corresponding clearance hole d₄ must be provided. Depending on the design and required clamping length a₁ ... a₃ of the cover, there are a number of assembly options as shown.

see also...

	Page
GN 653.2 Knurled Thumb Screws	QVX
GN 912.2 Socket Cap Screws	QVX
GN 7984.2 Socket Cap Screws (with Low-Profile Head)	QVX

Technical Information

Stainless Steel Characteristics	QVX
---------------------------------	-----

How to order

GN 7045.2-M4-16-NI

- ¹ Thread d₁,
- ² Length l₁,
- ³ Material

3.1
3.2
3.3
3.4
3.5
3.6
3.7
3.8
3.9
3.10

