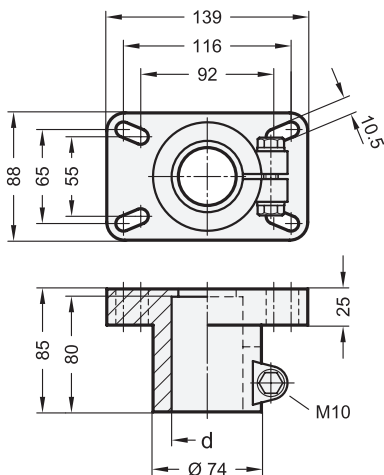
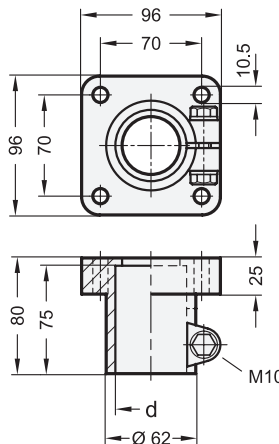


Type D



Type E



Metric



elesa

Original design TTA. / TTB.

SS

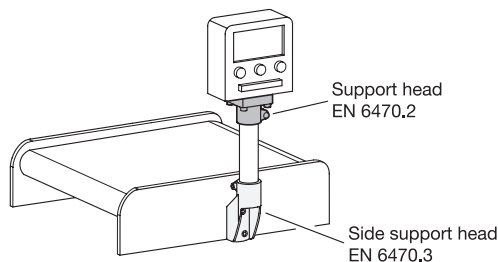
Stainless Steel

2 Type

D With slotted holes

E With bores

Application example



Metric table



Dimensions in: millimeters / inches

d	Type D	Type E	Tube nominal size in inch DIN EN 10220 / EN 10255
B 42.4		-	1 1/4"
B 48.3		B 48.3	1 1/2"
B 60.3		-	2"

Specification

Support head

- Plastic, polyamide (PA)
- Glass fiber reinforced
- Operating temperature
-22 °F to 212 °F (-30 °C to +100 °C)
- Black, matte finish

Clamping set

- Stainless steel AISI 304
- Hex head screw DIN 931
- Hex nut DIN 934
- Washers DIN 125

RoHS

On request

Type D with square 45 x 45

Support heads EN 6470.2 are used in combination with boiler or threaded tubes to build transport systems or work tables. They connect the structure, e.g. with conveyor belts or control panels, at a right angle to the tube axis.

see also...

	Page
EN 6470 Support Bases	QVX
EN 6470.1 Cross Connectors	QVX
EN 6470.3 Side Support Heads	QVX

Technical Information

	Page
Plastic Characteristics	QVX
Stainless Steel Characteristics	QVX

How to order

EN 6470.2-B48.3-E

1	Bore d
2	Type