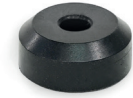
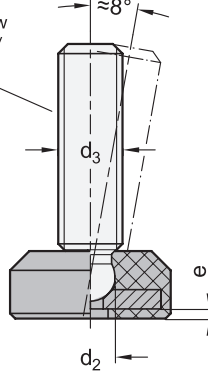


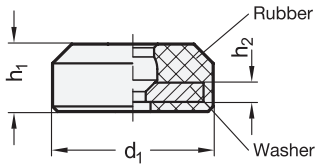
Metric

Mounting example

e.g.
Grub screw
GN 632.1 /
GN 632.5



SS Stainless Steel



Metric table

Dimensions in: millimeters / inches

d ₁	d ₂	d ₃		e ≈	h ₁	h ₂	
		Metric thread size	Inch thread size				
14 0.55	4.5 0.18	M 6	1/4 x 20	5/16 x 18	1 0.04	7.5 0.30	2 0.08
19 0.75	6.1 0.24	M 8	3/8 x 16	-	1.5 0.06	10 0.39	3 0.12
25 0.98	7.8 0.31	M 10	1/2 x 13	-	1.5 0.06	11 0.43	3 0.12
32 1.26	9.4 0.37	M 12	-	-	2 0.08	13 0.51	4 0.16

Specification

Acrylonitrile butadiene rubber (NBR)

- 85 ±5 Shore A
- Operating temperature up to 248 °F (120 °C)
- Black, matte finish
- Washer

85

● SW

Stainless steel AISI 304

RoHS

On request

Other Shore hardnesses

Accessory Page

GN 632.1 Grub Screws (Steel)	QVX
GN 632.5 Grub Screws (Stainless Steel)	QVX
GN 306 Adjustable Levers	QVX
GN 6336.11 Star Knobs	QVX
GN 7336.5 Hollow Knurled Knobs	QVX
GN 421.11 Hollow Knurled Screws	QVX
GN 903 Toggle Clamp Spindle Assemblies	QVX
GN 933.5 Hex Head Screws	QVX

Thrust pads GN 631.2 are used for clamping and pressing when surfaces must be protected against damage. They also counteract slipping, dampen shocks and reduce noise. The disk is encased in vulcanized rubber to ensure high load capacity and dimensional stability.

Depending on the application, various standard parts with ball end are available as accessories.

Together with the thrust pad, the ball end forms a ball joint that adapts to clamping surfaces that are uneven or not perpendicular to the screw axis. It also prevents the clamping surface from rotating when the thrust pad is in contact with the clamping surface.

The ball end snaps securely into the thrust pad and can be removed again if needed.

see also... Page

GN 638 Ball Jointed Leveling Feet	QVX
GN 631 Thrust Pads (Plastic)	QVX
GN 631.5 Thrust Pads (Stainless Steel)	QVX

Technical Information

Static Load Information	QVX
Plastic Characteristics	QVX
Stainless Steel Characteristics	QVX

How to order

1	Outer diameter d ₁
2	Bore diameter d ₂
3	Hardness
4	Color

GN631.2-32-9.4-85-SW