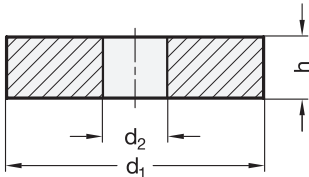
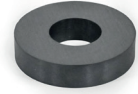
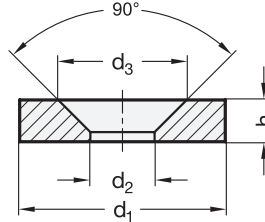


Metric

with bore



with countersunk



Specification

Hard ferrite

- Plain finish
- Operating temperature up to 482 °F (250 °C)

RoHS

On request

- Other dimensions



HF

Raw magnets GN 55.1 are disk-shaped unshielded magnets. They can be easily and securely fastened using the bore or countersunk. If no suitable retaining magnets or magnet systems are available, raw magnets may be used in combination with appropriate holding constructions to build up highly specific magnet systems.

When used without air gap, individual raw magnets always have lower magnetic forces than a magnet system in which shielding and magnetic return enormously intensify the force acting at the magnetic surface. Depending on the air gap between magnet and mating component, individual raw magnets, unlike magnet systems, can have substantially higher retaining forces.

see also...

GN 55.2 Raw Magnets (Unshielded, without Hole)

Page

QVX

Technical Information

More Information on Retaining Magnets

QVX

How to order

GN 55.1-HF-55-24-12

- 1
- 2
- 3
- 4

- 1 Magnet material
- 2 Outer diameter d_1
- 3 Inner diameter d_2
- 4 Height h



Metric table

2

3

4

With bore			
d ₁	d ₂	h	Nominal magnetic forces
19.8 ±0.2 0.780 ±0.008	10 ±0.2 0.394 ±0.008	4.3 ±0.1 0.169 ±0.004	5 N 1.12 lbf
20 ±0.1 0.787 ±0.004	6.5 ±0.2 0.256 ±0.008	5 ±0.1 0.197 ±0.004	5.5 N 1.24 lbf
26 ±0.4 1.024 ±0.016	15 ±0.3 0.591 ±0.012	3.8 ±0.1 0.150 ±0.004	6.5 N 1.46 lbf
32 ±0.2 1.260 ±0.008	12.2 ±0.1 0.480 ±0.039	8 ±0.2 0.315 ±0.008	15.5 N 3.48 lbf
35.5 ±0.7 1.398 ±0.028	6.5 ±0.3 0.256 ±0.012	9.5 ±0.1 0.374 ±0.004	20 N 4.50 lbf
36 ±0.3 1.417 ±0.012	18 ±0.5 0.709 ±0.020	8 ±0.1 0.315 ±0.004	17 N 3.82 lbf
40 ±0.8 1.575 ±0.031	19 ±0.4 0.748 ±0.016	7.5 ±0.1 0.295 ±0.004	26 N 5.85 lbf
45 ±0.8 1.772 ±0.031	22 ±0.4 0.866 ±0.016	8.5 ±0.1 0.335 ±0.004	28 N 6.29 lbf
51 ±1.1 2.008 ±0.043	24 ±0.5 0.945 ±0.020	8.4 ±0.1 0.331 ±0.004	30 N 6.74 lbf
55 ±1.1 2.165 ±0.043	24 ±0.5 0.945 ±0.020	8 ±0.1 0.315 ±0.004	30 N 6.74 lbf
55 ±1.1 2.165 ±0.043	24 ±0.5 0.945 ±0.020	12 ±0.1 0.472 ±0.004	35 N 7.87 lbf
70 ±1.2 2.756 ±0.047	15 ±0.5 0.591 ±0.020	15 ±0.1 0.591 ±0.004	75 N 16.86 lbf
72 ±0.2 2.835 ±0.008	32 ±0.5 1.260 ±0.020	8 ±0.1 0.315 ±0.004	32 N 7.19 lbf
72 ±1.2 2.835 ±0.047	32 ±0.5 1.260 ±0.020	15 ±0.1 0.591 ±0.004	53 N 11.91 lbf
86 ±1.2 3.386 ±0.047	34 ±0.5 1.339 ±0.020	18 ±0.1 0.709 ±0.004	106 N 23.83 lbf
102 ±0.2 4.016 ±0.008	51 ±1 2.008 ±0.039	20 ±0.1 0.787 ±0.004	145 N 32.60 lbf

2

3

4

Dimensions in: millimeters / inches

With countersunk				
d ₁	d ₂	h	d ₃	Nominal magnetic forces
13.6 ±0.3 0.535 ±0.012	3.5 ±0.1 0.138 ±0.004	3.9 ±0.1 0.154 ±0.004	6.5 ±1.5 0.256 ±0.049	2.5 N 0.56 lbf
17.2 ±0.3 0.677 ±0.012	4.1 ±0.4 0.161 ±0.016	5.3 ±0.1 0.209 ±0.004	9.5 ±0.5 0.374 ±0.020	5 N 1.12 lbf
21.8 ±0.4 0.858 ±0.016	5.5 ±0.2 0.217 ±0.008	6 ±0.1 0.236 ±0.004	11.5 ±1 0.453 ±0.039	8.5 N 1.91 lbf
28 ±0.5 1.102 ±0.020	5.5 ±0.3 0.217 ±0.012	6 ±0.1 0.236 ±0.004	11.5 ±1 0.453 ±0.039	13 N 2.92 lbf
31 ±0.8 1.220 ±0.031	5.3 ±0.3 0.209 ±0.012	15 ±0.5 0.591 ±0.020	12.5 ±1.8 0.492 ±0.079	24 N 5.40 lbf
35.5 ±0.8 1.398 ±0.031	5.5 ±0.2 0.217 ±0.008	6.5 ±0.1 0.256 ±0.004	12.5 ±1 0.492 ±0.039	18 N 4.05 lbf