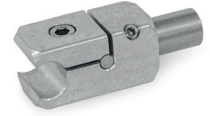


Metric




3 Type

- A** With bore
- W** With bolt

Metric table

Dimensions in: millimeters / inches

1 d_1 Bore for shaft tol. h11	2 d_2 Type A	d_3 Type W	d_4 Clamping thread	d_5	k	l_1	l_2	l_3	l_4	l_5	t	Adjustable lever kit for d_4 
B 8	B 8	8 0.31	M 4	M 4	16 0.63	16 0.63	32 1.26	2.5 0.10	30.5 1.20	5.5 0.22	8 0.31	GN 511-M4-16
B 10	B 10	10 0.39	M 5	M 5	20 0.79	17 0.67	38 1.50	3.1 0.12	36.1 1.42	7 0.28	10 0.39	GN 511-M5-20
B 12	B 12	12 0.47	M 5	M 5	20 0.79	19 0.75	42 1.65	3.6 0.14	39.6 1.56	8 0.31	12 0.47	GN 511-M5-20
B 15	B 15	15 0.59	M 6	M 6	25 0.98	21 0.83	52 2.05	4.4 0.17	48.9 1.93	10 0.39	15 0.59	GN 511-M6-25
B 16	B 16	16 0.63	M 6	M 6	25 0.98	24 0.94	55 2.17	4.8 0.19	51.8 2.04	11 0.43	16 0.63	GN 511-M6-25
B 20	B 20	20 0.79	M 6	M 6	30 1.18	26 1.02	63 2.48	6 0.24	59 2.32	12 0.47	18 0.71	GN 511-M6-30

Specification

Mounting clamp

- Aluminum
- Matte, tumbled finish
- Anodized finish, black

**MT
ELS**

Bolt (Type W)

Stainless steel AISI 303

Socket cap screws ISO 4762

Stainless steel

Dowel pin ISO 2338

Stainless steel

Set screw DIN 913 (Type A)

Stainless steel A2

Set screw DIN 915 (Type W)

Stainless steel A2

RoHS

Technical Information

Page

ISO Fundamental Tolerances

QVX

Stainless Steel Characteristics

QVX

Accessory

GN 511 Adjustable Lever Kits

QVX

GN 480.1 Round Rods / Tubes

QVX

Rail T-mounting clamps GN 476.2 connect tubes and rods in a T shape. They are used for applications such as side guides, where the mounting clamps must not protrude to the side.

In addition, the split clamping point permits subsequent insertion of the mounting clamp into an existing structure and simplifies installation when axial insertion is not possible, such as due to curves.

By combining one mounting clamp of type W and one of type A, two tubes or rods can be connected together at any adjustable angle. The standard clamping screw is a socket cap screw with hexagonal socket ISO 4762. It can be replaced by an adjustable lever kit GN 511 (for part number, see table of dimensions).

see also...

Page

GN 476 T-Mounting Clamps

QVX

GN 474.2 Rail Mounting Clamps

QVX

How to order (With bore)

GN 476.2-B12-B12-A-MT

- 1** Bore d_1
- 2** Bore d_2
- 3** Type
- 4** Finish

How to order (With bolt)

GN 476.2-B20-20-W-ELS

- 1** Bore d_1
- 2** Diameter d_3
- 3** Type
- 4** Finish

3.1
3.2
3.3
3.4
3.5
3.6
3.7
3.8
3.9
3.10