

2 Type

- K** With two adjustable levers and two socket cap screws
- S** With four socket cap screws

Metric table



Dimensions in: millimeters - inches

d ₁ Bore for shaft tol. h11	a Stroke max.	d ₂	d ₃	d ₄	h	k	l ₁ max.	l ₂	l ₃	l ₄	m
B 8	12 0.47	19 0.75	M 4	M 4	23.5 0.93	14 0.55	40 1.57	59 2.32	13.5 0.53	22 0.87	32 1.26
B 12	18 0.71	21 0.83	M 5	M 5	32 1.26	16 0.63	50 1.97	73 2.87	17 0.67	30 1.18	39 1.54
B 16	24 0.94	26 1.02	M 6	M 6	35 1.38	20 0.79	64 2.52	91 3.58	20.5 0.81	45 1.77	50 1.97

Specification



- Mounting clamp
Aluminum
- Matte, tumbled finish **MT**
- Anodized finish, black **ELS**
- Adjustable levers (Type K)
- Zinc die-cast
Powder coated
Silver RAL 9006, textured finish
- Threaded stud / retaining screw
Stainless steel AISI 303
- Adjusting wheel
Stainless steel AISI 303
- Thrust washer
Plastic
- Socket cap screws DIN 912
Stainless steel AISI 304
- 2x chemically blackened finish (Type S)
- 2x plain finish (Type K / Type S)
- Countersunk screw ISO 14581
Stainless steel AISI 304
- Spring
Spring steel AISI 301
- ISO Fundamental Tolerances → page QVX
- Stainless Steel Characteristics → page QVX
- RoHS

Information

Parallel mounting clamps with adjustable spindle GN 474.3 are used for fine adjustments of measuring or test setups. The parallel clamp can be adjusted in 0.004 in (0.1 mm) increments using the coarse scaling on the circumference of the adjusting wheel.

When using retaining rods / retaining tubes GN 480.1 in type LS with longitudinal scale, their scale provides orientation during presetting.

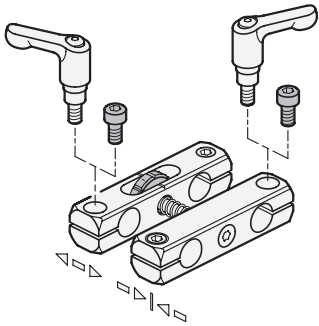
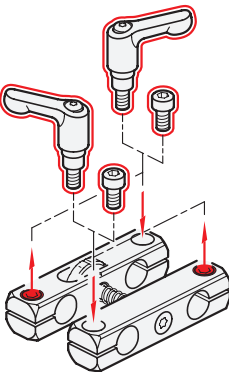
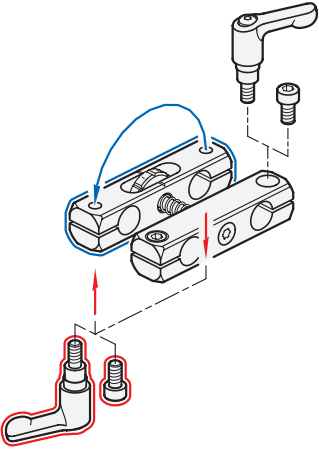
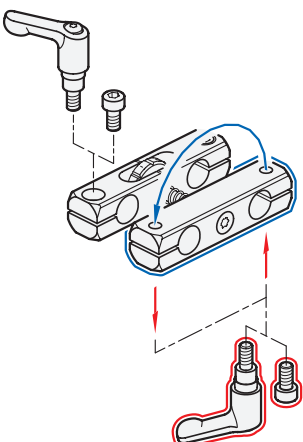
see also...

- Two-Way Mounting Clamps GN 474 → page QVX
- Parallel Mounting Clamps GN 474.1 → page QVX
- T-Mounting Clamps GN 476 → page QVX
- Mounting Clamps GN 477 → page QVX
- Swivel Ball Joint Mounting Clamps GN 487 → page QVX
- Round Rods / Tubes GN 480.1 → page QVX

How to order

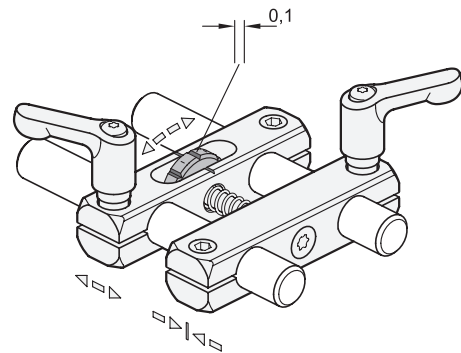
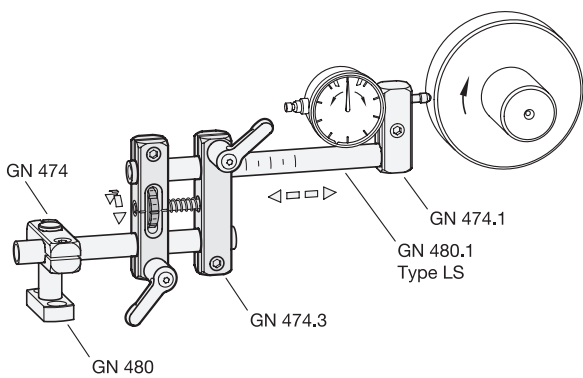
GN 474.3-B12-K-ELS

- 1** Bore d₁
- 2** Type
- 3** Finish

Assembly variants		
As delivered		
		
Clamping points inverted	Movable mounting clamp, angular and clamping point inverted	Fixed mounting clamp, angular and clamping point inverted
		

Application example

Adjustment



Coarse scaling on adjusting wheel for adjustment in 0.004 in (1/10 mm) increments