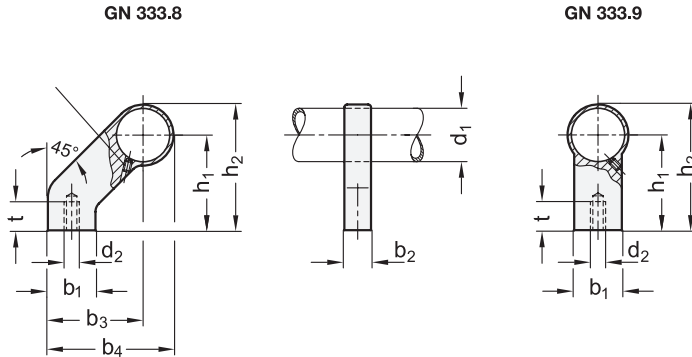


Metric



**2 Type**

**A** Mounting from the back (tapped blind hole)

**Metric table**



Dimensions in: millimeters / inches

| d <sub>1</sub> | d <sub>2</sub> | b <sub>1</sub> | b <sub>2</sub> | b <sub>3</sub> | b <sub>4</sub> | h <sub>1</sub> | h <sub>2</sub> | t<br>min.  |
|----------------|----------------|----------------|----------------|----------------|----------------|----------------|----------------|------------|
| 28<br>1.10     | M 8            | 25<br>0.98     | 14<br>0.55     | 50<br>1.97     | 66<br>2.60     | 50<br>1.97     | 66<br>2.60     | 15<br>0.59 |

**Specification**



**Handle leg**

Zinc die-cast  
Powder coated  
• Black, RAL 9005, textured finish  
• Silver, RAL 9006, textured finish

- SW
- SR

**Set screw with plastic tip**

GN 913.3-M4-6-KU  
Steel, blackened finish

RoHS

Handle legs GN 333.8 and GN 333.9 are highly stable in relation to their small dimensions. They can be used with longer tubes or higher loads when combined with the same 28 mm diameter tube used for the tubular handles GN 333, GN 333.1, GN 333.2 and GN 333.3.

Handle legs secure to tube via set screws. They are mounted to the surface from the bottom, utilizing a tapped blind hole.

see also...

|   | Page |
|---|------|
| <b>GN 333</b> Tubular Handles (with Angled Legs)                    | QVX  |
| <b>GN 333.1</b> Tubular Handles (with Straight Handle Legs)         | QVX  |
| <b>GN 333.2</b> Tubular Handles (with Movable Angled Handle Legs)   | QVX  |
| <b>GN 333.3</b> Tubular Handles (with Movable Straight Handle Legs) | QVX  |

**How to order (Angled)**

**GN 333.8-28-A-SW**

|   |                                |
|---|--------------------------------|
| 1 | Handle diameter d <sub>1</sub> |
| 2 | Type                           |
| 3 | Finish                         |

**How to order (Straight)**

**GN 333.9-28-A-SR**

|   |                                |
|---|--------------------------------|
| 1 | Handle diameter d <sub>1</sub> |
| 2 | Type                           |
| 3 | Finish                         |

1.1  
1.2  
1.3  
1.4  
2.1  
2.2  
2.3  
2.4

