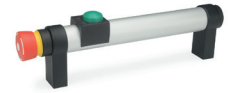


**Metric**



**3 Type**

- T0** Without button
- T1** With 1 button
- T2** With 2 buttons

**4 Identification no.**

- 1** Without emergency stop
- 2** With emergency stop

**Metric table**



Dimensions in: millimeters / inches

Length <b>l</b> ±0.25	<b>d</b>	<b>b<sub>1</sub></b>	<b>b<sub>2</sub></b>	<b>h<sub>1</sub></b>	<b>h<sub>2</sub></b>	<b>t</b> min.
200 7.87	M 8	27 1.06	17 0.67	51 2.01	68 2.68	15 0.59
300 11.81	M 8	27 1.06	17 0.67	51 2.01	68 2.68	15 0.59

**Specification**



**Handle tube**

Aluminum, wall thickness 1.5 mm

- Powder coated
- Black, RAL 9005, textured finish
- Anodized finish, natural color

- **SW**
- **EL**

**Handle legs**

Zinc die-cast  
Powder coated  
Black, RAL 9005, textured finish

**Cover**

(for identification no. 1 instead of emergency stop)  
Plastic, light gray

**Operating temperature**

-13 °F to +131 °F (-25 °C to +55 °C)

RoHS

**Accessory**

**GN 330** Cables with Connector Coupling QVX

Tubular handles GN 331 are available with various options for emergency stops and buttons. They can be used for activating individual functions of a machine control, such as unlocking the safety lock of a housing door right on the handle.

The possible switching operations depend on the options and are described below. For types T1 and T2, one set of caps (consisting of the colors red, green, and blue) is supplied for each button.

The red or green LED lights up regardless of whether the button is pressed and can be used to indicate the status of a control, for example.

**see also...**

	<b>Page</b>
<b>GN 333.1</b> Tubular Handles (with Straight Handle Legs)	QVX
<b>GN 332</b> Tubular Handles (with Angled Legs, with Power Switching Function)	QVX
<b>GN 422</b> Cabinet U-Handles (Zinc Die-Cast, with Power Switching Function)	QVX
<b>EN 628.4</b> Bridge Handles (Plastic, with Power Switching Function)	QVX

**Technical Information**

Load Capacity Information	QVX
IP Protection Classes	QVX

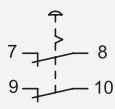
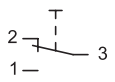
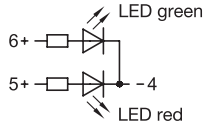
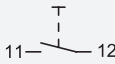
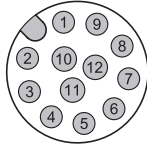

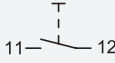

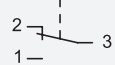
**How to order**

**GN 331-300-EL-T2-1**

- 1** Length **l**
- 2** Finish
- 3** Type
- 4** Identification no.

1.1  
1.2  
1.3  
1.4  
2.1  
2.2  
2.3  
2.4



Characteristics of the standard versions GN 331		
The tubular handles have the CE marking, low voltage guideline 2014 / 35 / EU		
<b>Emergency stop</b>	2-channel, normally closed contact	
<b>1st button with 2 LED</b>	Changeover contact	
	LED, red and green	
<b>2nd button</b>	Normally open contact	
<b>Contact termination, Pin configuration</b>	Plug M12x1, 12-pole	
<b>Switching voltage / Switching current</b>	max. 24 V DC / max. 0.5 A	
<b>Operating voltage (LEDs)</b>	24 V DC ±15% / 10 mA	
<b>Protection class</b>	Identification no. 1: IP 67 (in screwed condition) Identification no. 2: IP 54	
<b>Button color</b>	For each button a set of caps is included, in this colors: red, green, blue	
Additional variations as special application		
<b>Emergency stop</b>	1-channel	
<b>Number of buttons &gt; 2</b> <b>Button optional with</b>	Normally open contact	
	Normally closed contact	
	Changeover contact	
<b>Button with labeling area</b>	