

GN 322

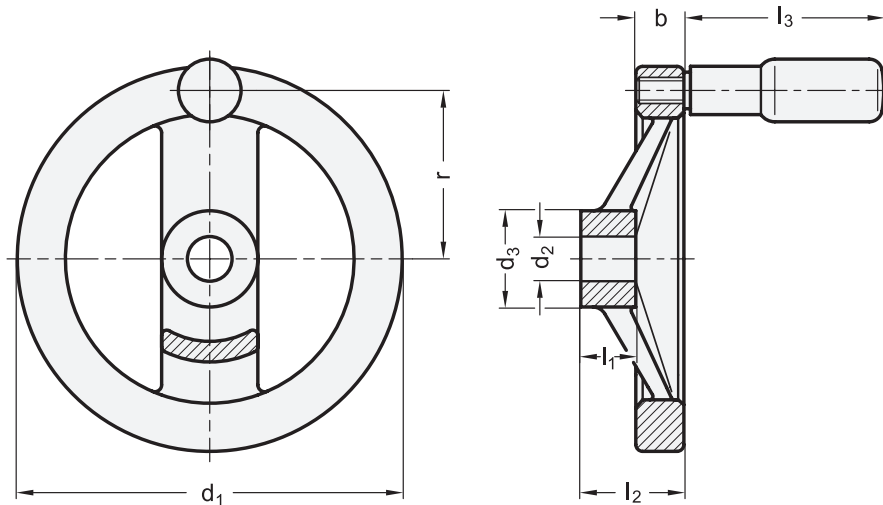
Plain, Rim Highly Polished

GN 324

Black Powder Coated

Two Spoked Handwheels

Aluminum, with or without Revolving Handle



2 Bore code

B Without keyway

4 Type

A Without handle

R With revolving handle

Specification

- Aluminum
 - Contact face of hub machined
 - Rim turned
- Radial and axial runout of the rim < 0.4 mm
- **GN 322**
 - Rim highly polished on all sides
 - Unmachined wheel body, shot-blasted finish
- **GN 324**
 - Wheel body
 - Completely powder coated
 - Black, matte textured finish
- Stepped cylindrical revolving handle GN 798
 - page 32
 - Plastic
 - Technopolymer
 - Black, matte finish
 - Threaded spindle
 - Steel, zinc plated, blue passivated finish
- Keyways WN / DIN 6885 → page 2039 / 2040
- Cross Holes GN 110 → page 2042
- ISO Fundamental Tolerances → page 2129
- RoHS compliant

On request

- Other modifications such as special inch and metric bores, keyways, set screw holes, etc.

Information

GN 322 two spoked handwheels are distinguished by modern design. The highly polished rim and the shot blasted finish do not, for most applications, require painting or other surface treatments.

GN 324 two spoked handwheels have the same dimensions as GN 322. The textured finish provides a clean, durable, modern look and feel.

For both series, there is no mounting hole in rim for handwheel without handle. Handle shipped loose; mounting of handle is required.

see also...

- Safety Handwheels (Disengage the Clutch) → page 266
- Countersunk Washers GN 184 (for Axial Fixing) → page 1150
- Flat-Faced Spoked Handwheels GN 924 (Aluminum, with or without Revolving Handle) → page 212

How to order (Inch, plain, rim highly polished)	1 Handwheel diameter d_1
$\begin{matrix} \color{red}\blacktriangledown & \color{red}\blacktriangledown & \color{red}\blacktriangledown & \color{red}\blacktriangledown \\ \mathbf{GN\ 322-200-B3/4-R} \end{matrix}$	2 Bore code
	3 Bore diameter d_2
	4 Type
	How to order (Metric, black, powder coated)
$\begin{matrix} \color{red}\blacktriangledown & \color{red}\blacktriangledown & \color{red}\blacktriangledown & \color{red}\blacktriangledown \\ \mathbf{GN\ 324-200-B18-R} \end{matrix}$	2 Bore code
	3 Bore diameter d_2
	4 Type

Inch table

Dimensions in: inches - *millimeters*

d ₁	d ₂ +0.001 Bore		d ₃	b	l ₁	l ₂	l ₃	r	Ø Handle GN 798		
	GN 322	GN 324									
4.92 125	1/2	-	1/2	-	1.22 31	0.59 15	0.71 18	1.30 33	2.42 61.5	2.13 54	0.87 22
5.51 140	5/8	-	5/8	-	1.42 36	0.65 16.5	0.75 19	1.42 36	3.01 76.5	2.40 61	0.94 24
6.30 160	1/2	5/8	1/2	-	1.42 36	0.71 18	0.79 20	1.54 39	3.01 76.5	2.80 71	0.94 24
7.87 200	5/8	3/4	5/8	3/4	1.65 42	0.81 20.5	0.94 24	1.77 45	3.41 86.5	3.50 89	0.98 25
9.84 250	3/4	-	7/8	-	1.89 48	0.91 23	1.10 28	2.01 51	3.41 86.5	4.45 113	0.98 25

Metric table

Dimensions in: millimeters - *inches*

d ₁	d ₂ H7 Bore		d ₃	b	l ₁	l ₂	l ₃	r	Ø Handle GN 798
125 4.92	12	14	31 1.22	15 0.59	18 0.71	33 1.30	61.5 2.42	54 2.13	22 0.87
140 5.51	14	16	36 1.42	16.5 0.65	19 0.75	36 1.42	76.5 3.01	61 2.40	24 0.94
160 6.30	14	16	36 1.42	18 0.71	20 0.79	39 1.54	76.5 3.01	71 2.80	24 0.94
200 7.87	18	20	42 1.65	20.5 0.81	24 0.94	45 1.77	86.5 3.41	89 3.50	25 0.98
250 9.84	22	26	48 1.89	23 0.91	28 1.10	51 2.01	86.5 3.41	113 4.45	25 0.98

1.1
1.2
1.3
1.4
2.1
2.2
2.3
2.4

