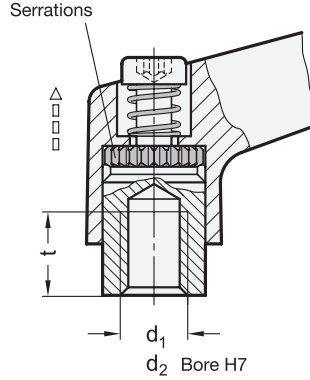
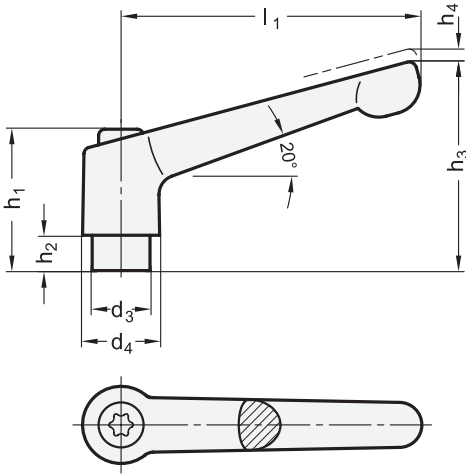


Inch | Metric



Specification

Lever body

Zinc die-cast

- Powder coated
- Black, RAL 9005, textured finish
- Orange, RAL 2004, textured finish
- Red, RAL 3000, textured finish
- Silver, RAL 9006, textured finish
- Chrome plated finish
- Uncoated
- Tumbled finish

- **SW**
- **OS**
- **RS**
- **SR**
- **CR**
- **RH**

Insert / Retaining screw

Steel, blackened finish

RoHS

On request

- Black, RAL 9005, silk shiny finish
- Special colors, bores, and threads

● **SZ**

Adjustable levers GN 300 have proven to be ideal wherever parts have to be clamped in a confined space or in a particular lever position. The insert is connected to the lever via serrations that can easily be disengaged. Pulling the lever upwards disengages the serrations, allowing it to be swiveled to the ideal clamping position. When releasing the lever, the serrations automatically re-engage.

see also...

	Page
GN 300 Adjustable Levers (with Steel Threaded Stud)	QVX
GN 300.1 Adjustable Levers (with Stainless Steel Insert)	QVX
GN 300.5 Adjustable Levers (Stainless Steel)	QVX
GN 300.4 Adjustable Levers (with Secure Clamping Force)	QVX
GN 302 Straight Adjustable Levers	QVX
GN 303.2 Adjustable Levers (with Push Button)	QVX

Technical Information

ISO Fundamental Tolerances	QVX
----------------------------	-----

How to order (Inch)

GN 300-22-6X32-SW

- 1 Lever length l_1
- 2 Thread d_1 (Bore d_2)
- 3 Color (Finish)

How to order (Metric)

GN 300-92-B12-SR

- 1 Lever length l_1
- 2 Bore d_2 (Thread d_1)
- 3 Color (Finish)

1.1
1.2
1.3
1.4
2.1
2.2
2.3
2.4

Inch table

Dimensions in: inches / millimeters

l ₁	d ₁ Thread			d ₂ H7 Bore		d ₃	d ₄	h ₁	h ₂	h ₃	h ₄ Stroke	t min.
	1	2	2									
0.87 22	6 x 32	8 x 32	10 x 32	-	-	0.31 8	0.41 10.5	0.73 18.5	0.08 2	0.91 23	0.12 3	0.20 5
1.18 30	10 x 32	10 x 24	1/4 x 20	B 1/4	-	0.39 10	0.51 13	0.96 24.5	0.16 4	1.22 31	0.14 3.5	0.35 9
1.77 45	10 x 32	10 x 24	1/4 x 20	B 1/4	-	0.39 10	0.51 13	0.96 24.5	0.16 4	1.34 34	0.14 3.5	0.35 9
2.48 63	1/4 x 20	5/16 x 18	-	B 5/16	-	0.53 13.5	0.69 17.5	1.22 31	0.26 6.5	1.77 45	0.16 4	0.43 11
3.07 78	5/16 x 18	3/8 x 16	-	B 3/8	-	0.63 16	0.83 21	1.42 36	0.31 8	2.13 54	0.16 4	0.55 14
3.62 92	3/8 x 16	1/2 x 13	-	B 1/2	-	0.75 19	0.94 24	1.69 43	0.43 11	2.52 64	0.16 4	0.67 17
4.25 108	1/2 x 13	5/8 x 11	-	B 1/2	-	0.91 23	1.18 30	1.99 50.5	0.47 12	2.95 75	0.20 5	0.87 22

Metric table

Dimensions in: millimeters / inches

l ₁	d ₁ Thread			d ₂ H7 Bore		d ₃	d ₄	h ₁	h ₂	h ₃	h ₄ Stroke	t min.
	1	2	2									
22 0.87	M 3	M 4	M 5	B 4	B 5	8 0.31	10.5 0.41	18.5 0.73	2 0.08	23 0.91	3 0.12	5 0.20
30 1.18	M 3	-	-	-	-	10 0.39	13 0.51	24.5 0.96	4 0.16	31 1.22	3.5 0.14	7 0.28
30 1.18	M 4	M 5	M 6	B 5	B 6	10 0.39	13 0.51	24.5 0.96	4 0.16	31 1.22	3.5 0.14	9 0.35
45 1.77	M 4	M 5	M 6	B 5	B 6	10 0.39	13 0.51	24.5 0.96	4 0.16	34 1.34	3.5 0.14	9 0.35
63 2.48	M 6	M 8	-	B 8	-	13.5 0.53	17.5 0.69	31 1.22	6.5 0.26	45 1.77	4 0.16	11 0.43
78 3.07	M 8	M 10	M 12	B 8	B 10	16 0.63	21 0.83	36 1.42	8 0.31	54 2.13	4 0.16	14 0.55
92 3.62	M 10	M 12	-	B 12	-	19 0.75	24 0.94	43 1.69	11 0.43	64 2.52	4 0.16	17 0.67
108 4.25	M 12	M 14	M 16	B 12	B 16	23 0.91	30 1.18	50.5 1.99	12 0.47	75 2.95	5 0.20	22 0.87