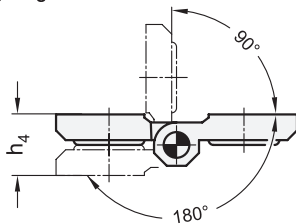
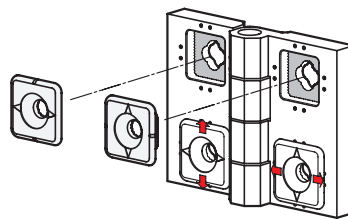


Swiveling range



Operating principle



Metric table

| ¹ | ² | | | | | | | | | | | | |
|--------------|--------------|-------|-------|---------------|-------|-------|-------|-------|-------|-------|-------|-------|--|
| l_1 | l_2 | d_1 | d_2 | $h_1 \approx$ | h_2 | h_3 | h_4 | l_3 | m_1 | m_2 | s_1 | s_2 | |
| 75 | 60 | 6.5 | 8 | 16 | 8 | 9.5 | 19 | 29.5 | 41.5 | 34 | 17 | 13 | |
| 2.95 | 2.36 | 0.26 | 0.31 | 0.63 | 0.31 | 0.37 | 0.75 | 1.16 | 1.63 | 1.34 | 0.67 | 0.51 | |

Dimensions in: millimeters - inches

Specification

- Body
Plastic
Technopolymer (Polyamide PA-HP)
- Glass fiber reinforced
- Black, matte finish
- Temperature resistant up to 176 °F (80 °C)
- Pin
Stainless steel AISI 303
- Load Rating Information → page QVX
- Plastic Characteristics → page QVX
- Stainless Steel Characteristics → page QVX
- RoHS compliant

Information

EN 236 hinges allow for technically and visually perfect positioning and alignment of a door in its frame. The serrations at the wings of the hinge (cross serration) and at the alignment bushings create a form lock which prevents the hinge from moving after installation. The tips of the arrows mark the 0 reference point for easier installation.

Depending on the installation position (rotating by 90°) of the alignment bushings, the hinge is adjustable both in vertical and in horizontal directions.

see also...

- Product Family Standard Parts for Profile Systems → page QVX
- List of Hinge Types → page QVX
- Adjustable Alignment Hinges GN 238 (Zinc Die-Cast) → page QVX
- Hinges EN 151.4 (Technopolymer Plastic, Adjustable) → page QVX
- T-Nut Assemblies GN 965 (for 30 / 40 Aluminum T-Slot Profile Systems) → page QVX
- T-Nut Assemblies GN 968 (for 30 / 40 / 45 Aluminum T-Slot Profile Systems) → page QVX

How to order

¹ ²
EN 236-75-60

- 1 Width l_1
- 2 Length l_2

