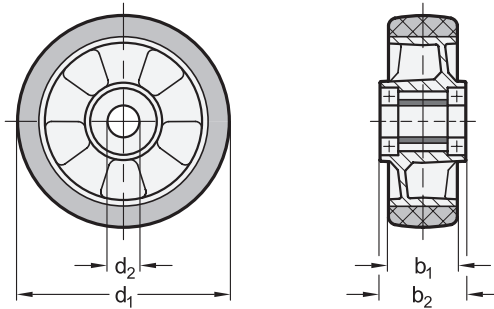


Metric



elesa
Original design RE.F2

2 Bearing type

K Annular ball bearing

3 Type

A Wheel without bracket

Metric table



Dimensions in: millimeters / inches

d ₁ Wheel Ø	b ₁	b ₂	d ₂	Recommended ergonomic max. load	Max. static load capacity	Max. dynamic load capacity
100 3.94	40 1.57	40 1.57	15 0.59	3000 N 674 lbf	4000 N 899 lbf	3000 N 674 lbf
125 4.92	40 1.57	50 1.97	20 0.79	3500 N 787 lbf	5000 N 1124 lbf	3500 N 787 lbf
160 6.30	50 1.97	58 2.28	20 0.79	5500 N 1236 lbf	8000 N 1798 lbf	5500 N 1236 lbf
200 7.87	50 1.97	58 2.28	20 0.79	7000 N 1574 lbf	10000 N 2248 lbf	7000 N 1574 lbf

Specification

Wheel tread

Plastic, polyurethane (PUR)

- Cast
- Green
- Hardness 75 Shore A

Wheel core

Aluminum die-cast

Operating temperature

-4 °F to 158 °F (-20 °C to +70 °C)

RoHS

Wheels EN 22886 are used in industrial and public indoor areas for moving transport carts, for example.

The wheel tread is suitable for all floor types and offers low rolling resistance and high elasticity as well as good wear and tearing resistance. It runs quietly and is gentle on floors while offering good obstacle clearing and vibration damping.

The low wear on the ball bearing increases the service life, and the mounting to the inner ring can be accomplished with zero axial backlash.

see also...

	Page
EN 22886 Medium Duty Casters (with Bracket, Light Version)	QVX
EN 22886 Medium Duty Casters (with Bracket, Medium Version)	QVX
EN 22886 Heavy Duty Casters (with Bracket, Heavy Version)	QVX
EN 22885 Wheels (ESD Version)	QVX
EN 22887 Wheels (Cast Iron Wheel Core)	QVX

Technical Information

Operating Conditions of Wheels and Casters	QVX
Technical Information for Wheels and Casters	QVX
Plastic Characteristics	QVX

How to order

EN 22886-125-K-A

- 1** Wheel diameter d₁
- 2** Bearing type
- 3** Type

3.1
3.2
3.3
3.4
3.5
3.6
3.7
3.8
3.9
3.10

