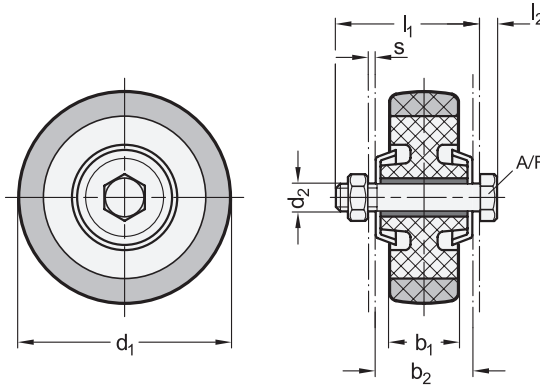


Metric



elesa
Original design RE.C7

2 Bearing type

G Friction bearing

3 Bracket type

A Wheel without bracket

Metric table



Dimensions in: millimeters / inches

d ₁ Wheel Ø	b ₁	b ₂	d ₂	l ₁	l ₂	s	A/F	Max. dynamic load capacity
40 1.57	18 0.71	22 0.87	M 6	32 1.26	4 0.16	2 0.08	10 0.39	300 N 67.44 lbf
50 1.97	18 0.71	22 0.87	M 6	32 1.26	4 0.16	2 0.08	10 0.39	350 N 78.68 lbf
60 2.36	24 0.94	30 1.18	M 6	40 1.57	4 0.16	2 0.08	10 0.39	500 N 112 lbf
80 3.15	24 0.94	30 1.18	M 6	40 1.57	4 0.16	2 0.08	10 0.39	550 N 124 lbf

Specification

Wheel tread

- Natural rubber (NR)
- Gray
- Abrasion-resistant
- Hardness 80 Shore A

Wheel core

Plastic, polypropylene (PP)

Thread guard

- Polyamide (PA) for d₁ = 40 mm
- Steel for d₁ > 40 mm

Bearing pins / Nuts

Steel, zinc plated

Operating temperature

+23 °F to +40 °F (-5 °C to +40 °C)

RoHS

Wheels EN 22870 are used in industrial and public indoor areas for moving light materials and equipment, for example.

The wheel tread offers low rolling resistance and high elasticity. It is gentle on floors and good at overcoming obstacles.

The integrated thread guard prevents textile threads from wrapping around the wheel axle and protects the bearing from soiling.

see also...

	Page
EN 22870 Light Duty Casters (with Bracket, Light Version)	QVX
EN 22870 Light Duty Casters (with Bracket, Double Wheel Version)	QVX
EN 22872 Wheels (Thermoplastic Elastomer Wheel Tread)	QVX
EN 22880 Light Duty Casters (Polyurethane Wheel Tread, Polyamide Wheel Core)	QVX

Technical Information

Operating Conditions of Wheels and Casters	QVX
Technical Information for Wheels and Casters	QVX
Plastic Characteristics	QVX

How to order

EN 22870-50-G-A

- 1** Wheel diameter d₁
- 2** Bearing type
- 3** Bracket type

3.1
3.2
3.3
3.4
3.5
3.6
3.7
3.8
3.9
3.10

