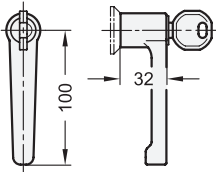


Metric

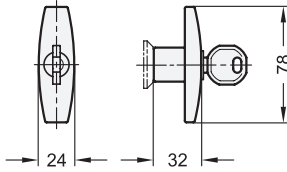


- 1 Type**
- SC** With key (Keyed alike)
 - SU** With key (Keyed differently)
 - SCK** With wing knob (Keyed alike)
 - SUK** With wing knob (Keyed differently)
 - SCT** With T-handle (Keyed alike)
 - SUT** With T-handle (Keyed differently)
 - LCG** With L-handle (Keyed alike) (only in SW)
 - LUG** With L-handle (Keyed differently) (only in SW)

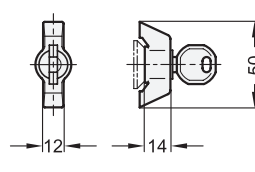
Type LCG / LUG



Type SCT / SUT



Type SCK / SUK



Metric table

2 Dimensions in: millimeters / inches

Latch arm distance A											d	Type	h														
											Type	SC, SU	Type	SCK, SUK, SCT, SUT, LCG, LUG													
4	0.16	8	0.31	13	0.51	16	0.63	20	0.79	24	0.94	28	1.10	32	1.26	36	1.42	40	1.57	45	1.77	28	1.10	32	1.26	6	0.24
6	0.24	10	0.39	14	0.55	18	0.71	22	0.87	26	1.02	30	1.18	34	1.34	38	1.50	42	1.65	50	1.97	28	1.10	32	1.26	6	0.24

Specification

Cam lock housing

- Zinc die-cast
- Housing collar chrome plated finish
- Housing collar Powder coated
- Black, RAL 9005, textured finish **● SW**

Operating element

- Plastic, Polyamide (PA) for type SCK / SUK / SCT / SUT
- Black, matte finish
- Zinc die-cast for type LCG / LUG
- Powder coated
- Black, RAL 9005, textured finish

Other parts

Steel, zinc plated, blue passivated finish

Key

Nickel silver with plastic hand piece

Protection class IP65

for type SCK / SUK / SCT / SUT / LCG / LUG

RoHS

Accessory

Page

- GN 120.4 Electromechanical Locking Systems QVX
- GN 120.1 Finger Grip Opening Handles QVX
- GN 120.2 Protective Guide Plates QVX

Cam locks GN 115 cam locks lock by a turning operation limited to 90° which moves the latch arm in the locked position behind the door frame. The bevels of the latch arm ease the closing of the door.

Latch arms are available with different bend angles to cover a latch arm distance A from 4 to 50 mm.

The cam locks are delivered with 2 keys and loosely enclosed latch arm. The key can be removed in both end positions.

Types with a standard lock allow every lock to be opened with the same key. For the types with different lock, there are more than 200 different lock variants, whose keys are marked by numbers.

Technical Information

Construction and Assembly Instructions	QVX
List of Cam Latch / Cam Lock Types	QVX
IP Protection Classes	QVX
Plastic Characteristics	QVX

How to order (Chrome plated housing collar)

1	Type
2	Latch arm distance A

GN 115-SC-42

How to order (Powder coated housing collar)

1	Type
2	Latch arm distance A
3	Finish (Housing collar)

GN 115-SU-18-SW

3.1
3.2
3.3
3.4
3.5
3.6
3.7
3.8
3.9
3.10