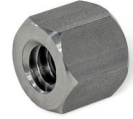


Metric



SS Stainless Steel

2 Lead direction
RH Right-hand thread

Metric table



Dimensions in: millimeters / inches

d x P Single-start	Length I	A/F
8 x 1.5	12 0.47	12 0.47
10 x 2	15 0.59	17 0.67
10 x 3	15 0.59	17 0.67
12 x 3	18 0.71	19 0.75
14 x 4	21 0.83	22 0.87
16 x 4	24 0.94	27 1.06
18 x 4	27 1.06	27 1.06
20 x 4	30 1.18	30 1.18
24 x 5	36 1.42	36 1.42
30 x 6	45 1.77	46 1.81
36 x 6	54 2.13	55 2.17
40 x 7	60 2.36	65 2.56
50 x 8	75 2.95	75 2.95

Specification

Steel 1.0718 **ST**

Stainless steel AISI 303 **NI**

RoHS

Accessory

GN 103 Trapezoidal Lead Screws QVX

Trapezoidal lead nuts GN 103.2 are used together with trapezoidal thread spindles GN 103. The wrench flats are used for fastening and prevent the nut from turning. The nut can also be driven via the hex.

Since steel and stainless steel nuts tend to cold welding (seizing), the thread must be permanently lubricated. Therefore, steel and stainless steel nuts are primarily used for sporadic adjustments.

see also...	Page
GN 103.1 Trapezoidal Lead Nuts (Gunmetal, with Flange)	QVX
EN 103.1 Trapezoidal Lead Nuts (Plastic, with Flange)	QVX
GN 103.3 Trapezoidal Lead Nuts (Cylindrical)	QVX

Technical Information	Page
Stainless Steel Characteristics	QVX

How to order

GN 103.2-20x4-RH-ST

1	Thread d x P
2	Lead direction
3	Material

3.1
3.2
3.3
3.4
3.5
3.6
3.7
3.8
3.9
3.10

