

Standard Parts for special requirements

Along with the huge offering of standard parts for a wide range of different applications and uses, Ganter also supplies products with highly specific properties and characteristics. These are grouped in product families and marked with appropriate icons, allowing standard parts to be selected specifically in terms of particular requirements.



The Stainless Steel product family

Standard parts made of rust-proof Stainless Steel grades – designed for use in the food industry, the chemical industry or in general for use in aggressive atmospheres or outdoors. Normally made without galvanic surface treatment, standard parts in the Stainless Steel product family are not only corrosion-resistant, but also precisely fitting and environmentally friendly. For details on the various Stainless Steels of Ganter's unique range of products → [Page 1489](#).



The Hygienic Design product family

Standard parts of the Hygienic Design product family are labeled with the HD icon. They combine high surface quality, freedom from dead spaces, non-scooped outer surfaces, and sealed bolting areas. A sealing concept based on FEM calculations ensures reliable contact pressure after installation.

Hygienic Design also means that the time and material needed for regular cleaning is significantly reduced—which also noticeably lowers operating costs. See details → [Page 18](#).



The Standard Parts for profile systems

Ganter's product range includes many standard parts for the construction of profile systems. These include, for example, cabinet „U“ handles, hinges, tube clamp connectors, mounting clamps, indexing plungers and T-nuts for profile systems.

Angle pieces GN 960 and GN 961, especially developed by Ganter, fill out this product offering. See details → [Page 20](#).



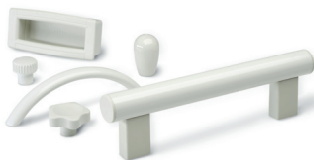
The Ergostyle® product family

Perfection in ergonomics and design: The Ergostyle® product family meets the aesthetic demands and need for easy operation required in modern working environments. Functional design supports the visual differentiation of the products and highlights their high quality. Ergostyle® standard parts have been awarded a number of design prizes. They are recognized by the signature: five small dots.



The Softline product family

Standard parts fitted with durable elastomer jackets. Their soft, slip-proof surfaces enhance the force transfer between the operator's hand and the operating element – an unbeatable advantage in moist, oily, greasy, hot or cold environments. Standard parts in the Softline product family also meet ultimate ergonomic demands in every respect.



The Cleanline product family

Cleanline standard parts were developed for areas where every component needs to have a clean appearance. That's why they come in white as standard. They are typically used for medical, laboratory or healthcare applications. For plastic Cleanline standard parts, metal parts like threaded inserts and spindles are made of Stainless Steel.



The ATEX product family

Standard parts developed specially for hydraulics and gear construction, suitable for use in applications with risk of explosion. Each standard part in this product family includes complete documentation, providing details and information on the underlying European Explosive Atmosphere Directive (ATEX).



The ESD product family

Plastic standard parts that are electrically conductive, due to special materials that counteract static charges. Designed for use in assembly areas where components sensitive to static electric charges are handled. The letters ESD on each element indicate these special antistatic properties under ICE 61340-5-1.



Inch sizes available

Our extensive range of products also includes many product series which are not only available in metric sizes but also inch sizes, indicated by this symbol. Please contact us with respect to availability and delivery times.