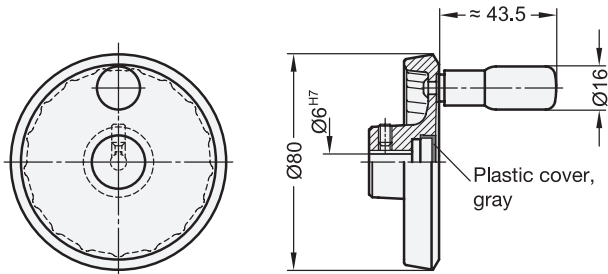


## Handwheels for Linear Actuators and Transfer Units

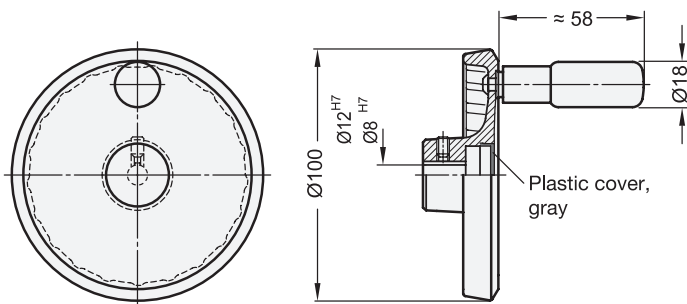
Aluminum, Black Powder Coated



**Flat-Faced Solid Disk Handwheel for**  
- Linear Actuator Ø 18 mm  
- Double Tube Linear Actuator Ø 18 mm  
GN 923.18-80-K6-R

### Specification

see GN 923

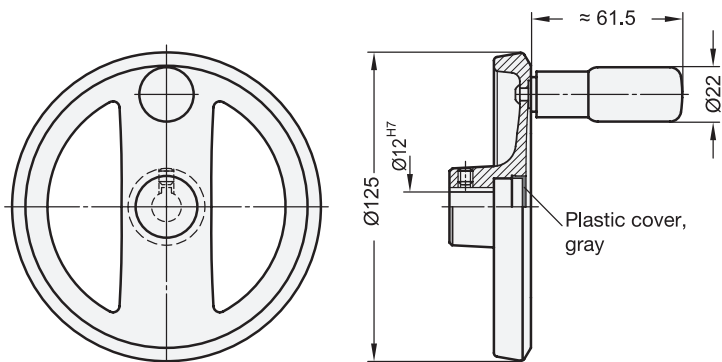


**Flat-Faced Solid Disk Handwheel for**  
- Linear Actuator Ø 30 mm / Ø 30 mm  
- Double Tube Linear Actuator Ø 30 mm  
GN 923.30-100-K8-R

**Flat-Faced Solid Disk Handwheel for**  
- Linear Actuator Ø 40 mm / Ø 40 mm  
- Double Tube Linear Actuator Ø 40 mm  
GN 923.40-100-K12-R

### Specification

see GN 923



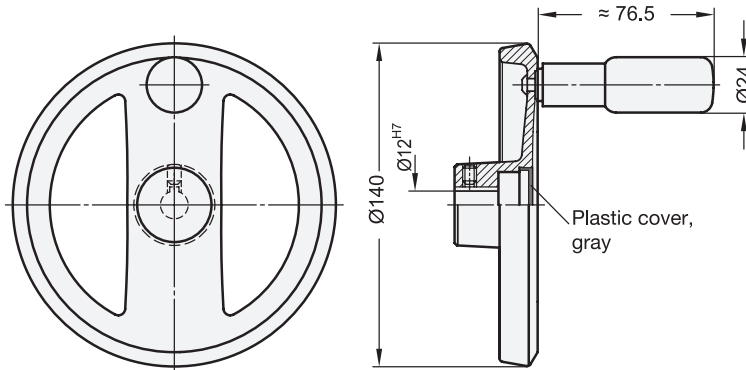
**Flat-Faced Spoked Handwheel for**  
- Linear Actuator Ø 40 mm / Ø 40 mm  
- Double Tube Linear Actuator Ø 40 mm  
GN 924.40-125-K12-R

### Specification

see GN 924

## Handwheels for Linear Actuators and Transfer Units

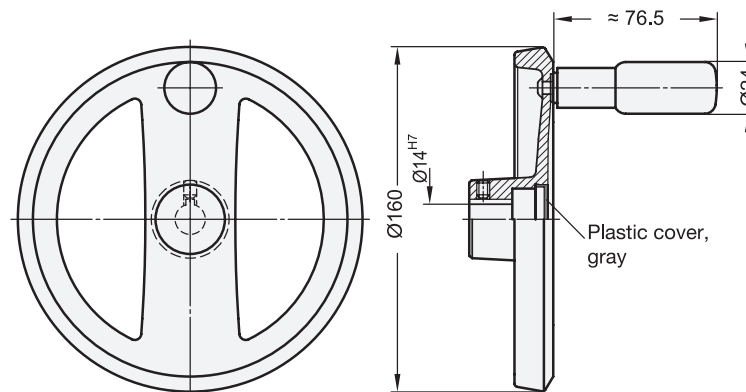
Aluminum, Black Powder Coated



**Flat-Faced Spoked Handwheel for**  
- Linear Actuator Ø 50 mm /  $\nabla$  50 mm  
- Double Tube Linear Actuator Ø 50 mm  
GN 924.50-140-K12-R

### Specification

see GN 924



**Flat-Faced Spoked Handwheel for**  
- Linear Actuator Ø 60 mm  
- Double Tube Linear Actuator Ø 60 mm  
GN 924.60-160-K14-R

### Specification

see GN 924

