

Installation instructions

Before installation of the position indicator a bore for the torque limiting contact point is to be placed (see left).

With the **EN 952.1 mounting adapters** the hollow shaft (with bore 20 H7) of the position indicator can be adapted to fit the spindle. → page 388

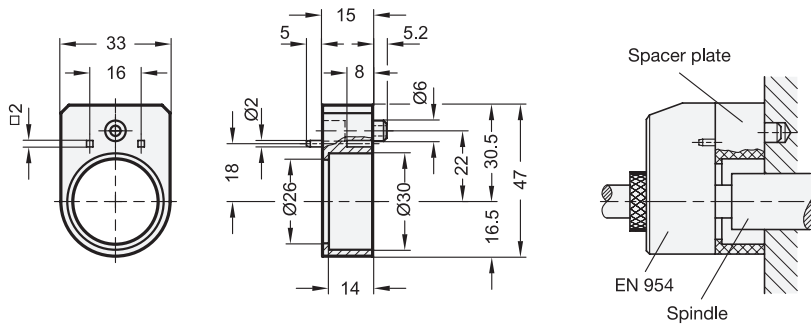
The mounting of the position indicator is via the torque limiting contact point which is connected to the hollow spindle and secured with a set screw.

Before completing the installation, turn the spindle to the starting point (0 position) and zero the position indicator.

With **GN 954.7 clamping plates** spindles can be clamped and secured after adjusting. → page XYZ

EN 954.1 Spacer Plate

Technopolymer Plastic, for EN 954 Position Indicators



Specification

- Plastic
Technopolymer (Polyamide PA)
- Temperature resistant up to 176 °F (80 °C)
- Black, matte finish

• RoHS compliant

Information

The EN 954.1 spacer plate is used for bridging spindle adaptors, spacer rings, etc. for EN 954.

The square bore holes are used for the machine-side fastening with e.g. socket button head self-tapping screws in accordance with DIN ISO 7049.

How to order
EN 954.1

1.1
1.2
1.3
1.4
2.1
2.2
2.3
2.4