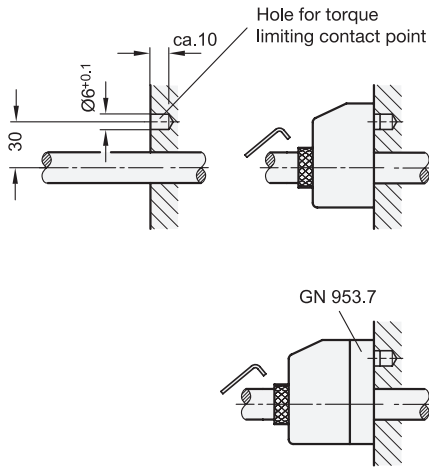


Installation instructions



Before installing the position indicator, a locating bore for the torque limiting contact point is to be drilled on the machine side according to the sketch.

With **EN 952.1 mounting adapters** the hollow shaft (with bore 20 H7) of the position indicator can be adapted to fit the spindle. → page 388

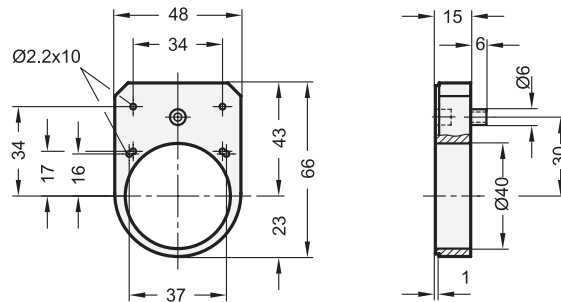
The mounting of the position indicator is via the torque limiting contact point which is connected to the hollow spindle and secured with a set screw.

Before completing the installation, turn the spindle to the starting point (0 position) and zero the position indicator.

With **GN 953.7 clamping plates** spindles can be clamped and secured after adjusting. → page XYZ

EN 953.1 Spacer Plate

Technopolymer Plastic, for EN 953 Position Indicators



Specification

- Plastic
Technopolymer (Polyamide PA)
Black, matte finish
- RoHS compliant

Information

The previous EN 952 position indicators are replaced by EN 953 position indicators, they are dimensionally reduced compared to EN 952.

The EN 953.1 spacer plate is used as adapter in case the dimensions on the machine body are applied to match the previous model EN 952.

The bore holes Ø 2.2 are used for the machine-side fastening with e.g. socket button head self-tapping screws in accordance with DIN ISO 7049.

How to order

EN 953.1

1.1
1.2
1.3
1.4
2.1
2.2
2.3
2.4