

3 Type
C2 For screwing

Metric table

1 **2**

Dimensions in: millimeters - inches

h₁ max.	l₁	F_H Holding capacity	b₁	b₂	d₁	d₂	h₂	h₃	h₄	l₂	l₃	l₄	l₅	l₆	m	w₁ Stroke	w₂ Adjustable range
40 1.57	32 1.26	15000 N 3372 lbf	60 2.36	26 1.02	M 10	8.5 0.33	111 4.37	168 6.61	129 5.08	30 1.18	18 0.71	72 2.83	168 6.61	173 6.81	45 1.77	19 0.75	32 1.26
75 2.95	32 1.26	15000 N 3372 lbf	60 2.36	26 1.02	M 10	8.5 0.33	146 5.75	168 6.61	164 6.46	30 1.18	18 0.71	72 2.83	168 6.61	207 8.15	45 1.77	19 0.75	32 1.26

Specification

- Clamp / operating handle
Steel
- Forged
- Blackened finish
- Bearing flange
Steel sheet metal, blackened finish
- Spindle assembly
Steel, blackened finish
- Counter plate / bearing pin
Steel, blackened finish
- RoHS compliant

Accessory

- Toggle clamp spindle assemblies GN 802
→ page 859

Information

GN 855 C-clamps feature an especially robust, sturdy and compact design, allowing them to be used under severe and demanding conditions, e.g. higher temperatures, dust, mist, etc.

C-clamps are normally installed and mounted at the clamping point. The counter plate (supplied loose) has a ball socket and is designed for attaching to the counter piece to be clamped. In connection with the ball-type bolt, this configuration ensures the precise positioning of the clamp.

If the counter plate is not to remain at the counter piece to be clamped, the clamping bracket may alternatively also be used to hold GN 802 toggle clamp spindle assemblies which have a pendulum type bearing surface.

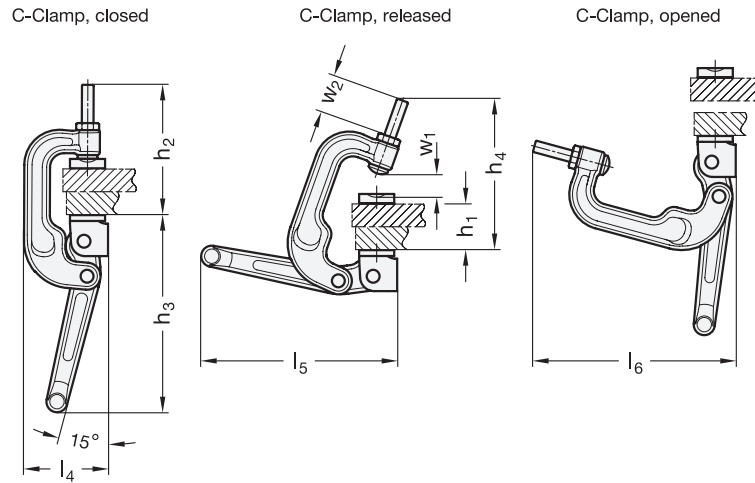
see also...

- Grub Screws DIN 6332 → page 1119
- Thrust Pads GN 6311.1 → page 1123

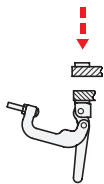
How to order

GN 855-40-32-C2

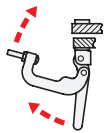
- 1** Clamping height **h₁**
- 2** Clamp width **l₁**
- 3** Type



Description of function



Place the pieces to be clamped into the clamping position, e.g. close the lid or place the piece to be clamped on top.



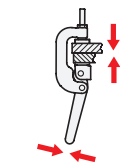
Then move the clamping bracket and the operating handle of the C-clamp upwards.



Now move the clamping bracket forward such that the spindle assembly is located in the ball socket of the counter plate.



Move the operating handle downwards until the clamping force has exceeded the dead point.



When closed, the C-clamp now holds its position on its own.

1.1
1.2
1.3
1.4
2.1
2.2
2.3
2.4

