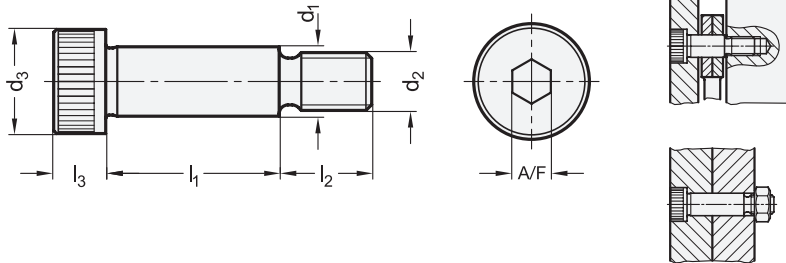




Application examples



**Metric table**

1 2 3

Dimensions in: millimeters - inches

d <sub>1</sub> f9	d <sub>2</sub> Thread	l <sub>1</sub> +0.25															d <sub>3</sub>	l <sub>2</sub>	l <sub>3</sub>	A/F
4	M 3	4	5	6	8	10	12	16	20	25	30	-	-	-	-	-	7	7	3	2
0.16		0.16	0.20	0.24	0.31	0.39	0.47	0.63	0.79	0.98	1.18						0.28	0.28	0.118	
5	M 4	5	6	8	10	12	16	20	25	30	40	-	-	-	-	-	9	8	4	2.5
0.20		0.20	0.24	0.31	0.39	0.47	0.63	0.79	0.98	1.18	1.57						0.35	0.31	0.157	
6	M 5	10	12	16	20	25	30	35	40	45	50	55	60	65	70	80	10	9.5	4.5	3
0.24		0.39	0.47	0.63	0.79	0.98	1.18	1.38	1.57	1.77	1.97	2.17	2.36	2.56	2.76	3.15	0.39	0.37	0.177	
8	M 6	16	20	25	30	35	40	45	50	55	60	65	70	80	90	100	13	11	5.5	4
0.31		0.63	0.79	0.98	1.18	1.38	1.57	1.77	1.97	2.17	2.36	2.56	2.76	3.15	3.54	3.94	0.51	0.43	0.217	
10	M 8	16	20	25	30	35	40	45	50	55	60	65	70	80	90	100	16	13	7	5
0.39		0.63	0.79	0.98	1.18	1.38	1.57	1.77	1.97	2.17	2.36	2.56	2.76	3.15	3.54	3.94	0.63	0.51	0.276	
12	M 10	16	20	25	30	35	40	45	50	55	60	65	70	80	90	100	18	16	9-1	6
0.47		0.63	0.79	0.98	1.18	1.38	1.57	1.77	1.97	2.17	2.36	2.56	2.76	3.15	3.54	3.94	0.71	0.63	0.354 -0.039	
16	M 12	25	30	35	40	45	50	55	60	65	70	80	90	100	-	-	24	18	11	8
0.63		0.98	1.18	1.38	1.57	1.77	1.97	2.17	2.36	2.56	2.76	3.15	3.54	3.94			0.94	0.71	0.433	
20	M 16	30	35	40	45	50	55	60	65	70	80	90	100	-	-	-	30	22	14	10
0.79		1.18	1.38	1.57	1.77	1.97	2.17	2.36	2.56	2.76	3.15	3.54	3.94				1.18	0.87	0.551	
24	M 20	50	55	60	65	70	80	90	100	-	-	-	-	-	-	-	36	27	16	12
0.94		1.97	2.17	2.36	2.56	2.76	3.15	3.54	3.94								1.42	1.06	0.630	

**Specification**

- Steel
  - Property class 12.9
  - Blackened finish
  - Adapter dimension d<sub>1</sub> ground
- ISO Fundamental Tolerances → page 2129
- Strength Values of Screws → page 2127
- RoHS compliant

**Information**

ISO 7379 socket shoulder screws are cost-saving construction components for a wide variety of different uses.

The maximum tightening torque should not be defined by the property class 12.9, but it is instead limited by the relatively small bearing points (shoulders) on the recesses at the transition point from d<sub>1</sub> to d<sub>2</sub> and d<sub>3</sub>.

The ISO standard sheet allows for screws with or without knurled head.

see also...

- Cylinder Head Shoulder Bolts GN 732.1 (Steel) → page 1111

<p>How to order</p> <p><b>ISO 7379-10-M8-40</b></p>	1	Collet diameter d <sub>1</sub>
	2	Thread d <sub>2</sub>
	3	Length l <sub>1</sub>