

GN 6319.1

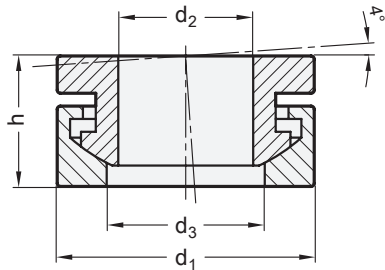
Steel / Stainless Steel

Spherical Washers

Seat and Dished Combined Type



JWWINCO
A Ganter Company



SS Stainless Steel

Metric table



Dimensions in: millimeters - inches

d ₁	d ₂	d ₃	h	For screws with thread size	Static load	
					Steel	Stainless steel
13 <i>0.51</i>	6.4 <i>0.25</i>	7.4 <i>0.29</i>	7 <i>0.28</i>	M 6	9 kN <i>2023 lbf</i>	6 kN <i>1349 lbf</i>
17 <i>0.67</i>	8.4 <i>0.33</i>	9.7 <i>0.38</i>	8.5 <i>0.33</i>	M 8	17 kN <i>3822 lbf</i>	12 kN <i>2698 lbf</i>
21 <i>0.83</i>	10.5 <i>0.41</i>	12 <i>0.47</i>	10.5 <i>0.41</i>	M 10	26 kN <i>5845 lbf</i>	16 kN <i>3597 lbf</i>
25 <i>0.98</i>	13 <i>0.51</i>	14.8 <i>0.58</i>	13 <i>0.51</i>	M 12	38 kN <i>8543 lbf</i>	24 kN <i>5395 lbf</i>
32 <i>1.26</i>	17 <i>0.67</i>	19.7 <i>0.78</i>	17 <i>0.67</i>	M 16	73 kN <i>16411 lbf</i>	45 kN <i>10116 lbf</i>
40 <i>1.57</i>	21 <i>0.83</i>	24.6 <i>0.97</i>	20.3 <i>0.80</i>	M 20	117 kN <i>26303 lbf</i>	71 kN <i>15961 lbf</i>

Specification

- Steel **ST**
 - Case-hardened (all round depth 0.2 to 0.4 mm)
 - Hardness (550 + 100) HV 10
- Stainless steel AISI 303 **NI**
- *Stainless Steel Characteristics* → page 2143
- [RoHS compliant](#)

Information

GN 6319.1 spherical washers provide an “undetachable” combination of DIN 6319 seat and dished type spherical washers. This simplifies storage and allows for fast and efficient installation.

see also...

- *Spherical Washers DIN 6319 (Steel)* → page 1154
- *Spherical Washers DIN 6319 (Stainless Steel)* → page 1155

How to order

GN6319.1-21-ST

- 1 Outer diameter d₁
- 2 Material