

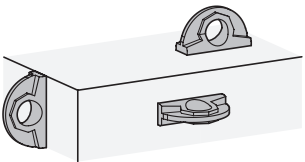
Metric



 **RUD®**

SS Stainless Steel

Application example



Metric table

Dimensions in: millimeters / inches										
b		d	h ₁	h ₂	k ₁	k ₂	Nominal load (WLL) in metric tons		Max. permissible lashing force in daN (LC)	
Steel	Stainless steel						Steel	Stainless steel	Steel	Stainless steel
70 2.76	70 2.76	32 1.26	38 1.50	50 1.97	12 0.47	22 0.87	0.8	0.8	1600	1600
100 3.94	100 3.94	35 1.38	41.5 1.63	57 2.24	16 0.63	30 1.18	1.6	1.6	3200	3200
137 5.39	137 5.39	50 1.97	59 2.32	80 3.15	23 0.91	41 1.61	3.2	2.7	6400	5400
172 6.77	-	60 2.36	71.5 2.81	99 3.90	27 1.06	51 2.01	5	-	10000	-
228 8.98	-	80 3.15	95 3.74	130 5.12	38 1.50	70 2.76	10	-	20000	-

Specification

- Steel** German Material No. 1.6541
- Forged
 - High-tensile tempered
 - 100 % electro magnetic tensile tested to EN 1677
 - Phosphate-treated
- Stainless steel** German Material No. 1.4462
- Forged
 - 100 % electro magnetic tensile tested to EN 1677
 - Passivated by pickling
- RoHS

Lifting points GN 589 / GN 589.5 are intended for suspending lifting gear and lashing elements and are characterized by a particularly low profile. They are welded e.g. to load attachment points or directly onto the load itself and can absorb loads in any direction.

The nominal load capacity specified in the table is clearly marked on the lifting point. It applies to the most unfavourable load application of the load types listed opposite. It applies to the least favorable load case of the listed load types.

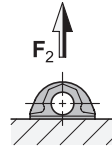
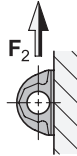
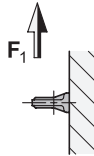
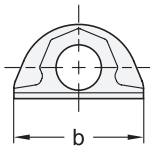
Lifting points GN 589 / GN 589.5 comply with Machinery Directive 2006 / 42 / EG.

see also...	Page
GN 587.1 Load Rings (Steel, Weldable)	QVX
GN 584 D -Shackles (Heat-Treated Steel)	QVX
GN 585 Bow Shackles (Heat-Treated Steel)	QVX

How to order (Steel)	
GN 589-137	1 Width b

How to order (Stainless steel)	
GN 589.5-100	1 Width b

Load Capacity

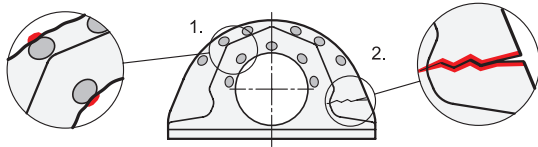


Dimensions in: millimeters / inches

b	F₁ max. in t	F₂ max. in t
Steel		
70 2.76	0.8	2
100 3.94	1.6	4
137 5.39	3.2	9
172 6.77	5	12
228 8.98	10	20

b	F₁ max. in t	F₂ max. in t
Stainless steel		
70 2.76	0.8	3
100 3.94	1.6	5
137 5.39	2.7	7.5

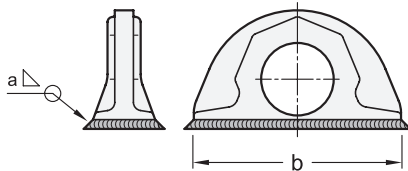
Discard Maturity / Service Life / Safety Instructions



1. The wear marks can be used to check the wear of the lifting point. If these coincide with the outer contour or the contour of the bore, the end of the service life of the lifting point has been reached, which is also referred to as discard maturity.
2. If the lifting point is bent or has damage or cracks, it is no longer safe to continue using it and must therefore not be used.

In either case, the lifting point must be replaced.

Fastening / Welding Instructions



b	a Size fillet seam
70 2.76	3
100 3.94	4
137 5.39	6
172 6.77	7
228 8.98	8

Welding must be made by an approved welder in accordance with EN 287-1. The specified loading values are valid for an operating temperature of between -40 °F to +392 °F (-40 °C to +200 °C). Information on load capacity at higher temperatures is available upon request.

Other important information and notes can also be found in the operating instruction. It is part of the scope of delivery and can be downloaded as a PDF in the download section.