

2 Type

SCK With wing knob
(Keyed alike)

SCT With T-handle
(Keyed alike)

Metric table


3

4

Dimensions in: millimeters / inches

h ₁	Latch arm distance A												h ₂	s max.
30 1.18	16 0.63	20 0.79	25 0.98	28 1.10	32 1.26	36 1.42	40 1.57	44 1.73	48 1.89	52 2.05	57 2.24	40 1.57	20 0.79	
30 1.18	18 0.71	22 0.87	26 1.02	30 1.18	34 1.34	38 1.50	42 1.65	46 1.81	50 1.97	54 2.13	62 2.44	40 1.57	20 0.79	
40 1.57	26 1.02	30 1.18	35 1.38	38 1.50	42 1.65	46 1.81	50 1.97	54 2.13	58 2.28	62 2.44	67 2.64	50 1.97	30 1.18	
40 1.57	28 1.10	32 1.26	36 1.42	40 1.57	44 1.73	48 1.89	52 2.05	56 2.20	60 2.36	64 2.52	72 2.83	50 1.97	30 1.18	
50 1.97	36 1.42	40 1.57	45 1.77	48 1.89	52 2.05	56 2.20	60 2.36	64 2.52	68 2.68	72 2.83	77 3.03	60 2.36	40 1.57	
50 1.97	38 1.50	42 1.65	46 1.81	50 1.97	54 2.13	58 2.28	62 2.44	66 2.60	70 2.76	74 2.91	82 3.23	60 2.36	40 1.57	
60 2.36	46 1.81	50 1.97	55 2.17	58 2.28	62 2.44	66 2.60	70 2.76	74 2.91	78 3.07	82 3.23	87 3.43	70 2.76	50 1.97	
60 2.36	48 1.89	52 2.05	56 2.20	60 2.36	64 2.52	68 2.68	72 2.83	76 2.99	80 3.15	84 3.31	92 3.62	70 2.76	50 1.97	

Specification

Cam lock housing	
Zinc die-cast	ZD
Housing collar	
Powder coated	
Black, RAL 9005, textured finish	 SW
Operating elements	
Plastic, Polyamide (PA)	
Black, matte finish	
Key	
Nickel silver with plastic hand piece	
Other parts	
Steel, zinc plated, blue passivated finish	
Protection class IP65	
RoHS	
Accessory	Page
GN 120.2 Protective Guide Plates	QVX
GN 123 Sheet Metal Punches	QVX

Cam locks GN 515 are identical to standard latches GN 115 except for the extended housing. They are operated with a rotation limited to 90°, which moves the latch arm into the locked position behind the frame. The bevels of the latch arm ease the closing of the door.

By installing latch arms with different bend profiles, the latch arm distance A can be varied from 16 to 92 mm depending on the housing height h_1 , while the extended housing is suitable for a door thickness s up to 50 mm.

The cam locks each come with 2 keys and loosely enclosed latch arm. The key can be removed in both end positions. The lock is standard, so that every lock can be opened with the same key.

Technical Information

Construction and Assembly Instructions	QVX
IP Protection Classes	QVX
Plastic Characteristics	QVX

How to order

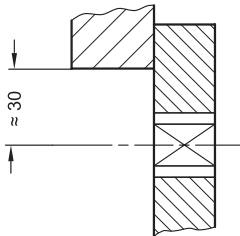
1	Material
2	Type
3	Height h_1
4	Latch arm distance A
5	Finish

GN 515-ZD-SCK-40-38-SW

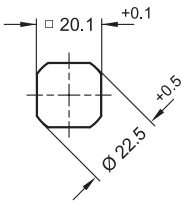


Construction and Assembly Instructions

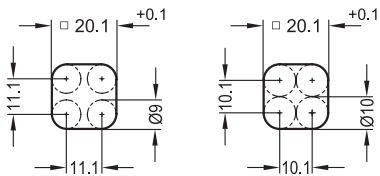
Hole distance



Installation hole for punching or laser machining



Installation hole for drilling or milling



For installation, set a hole in the door, cover or hatch as shown in the outline drawing.

The required installation hole in the door leaf, is usually generated by punching or laser machining in series production. The installation hole diameter can also be created by drilling or milling as shown in the outline drawings.

When mounting the latches, care should be taken to ensure that the internal parts of the latch do not fall out of the housing when removing or mounting the hex head screw.

Structure

