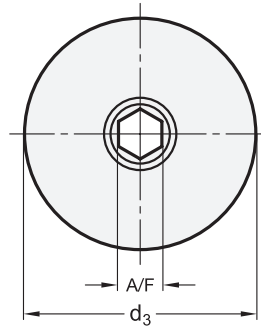


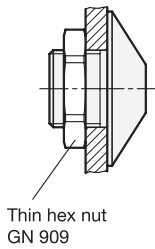
Assembly examples



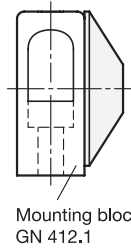
Application example



SS Stainless Steel

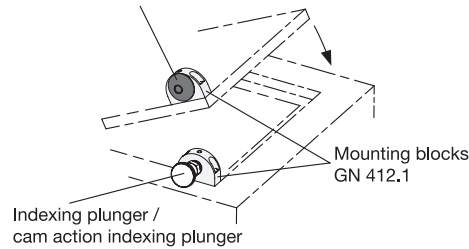


Thin hex nut  
GN 909



Mounting block  
GN 412.1

Locating bushing with tapered flange  
GN 412.3 / GN 412.5



**Metric table**

Dimensions in: millimeters - inches

| <sup>1</sup><br>d <sub>1</sub><br>Thread | <sup>2</sup><br>d <sub>2</sub> +0.1<br>Bore | d <sub>3</sub> | d <sub>4</sub> -0.05 | l <sub>1</sub> | l <sub>2</sub> | l <sub>3</sub> | A/F | t          |
|--|---|----------------|----------------------|----------------|----------------|----------------|-----|------------|
| M 12 x 1.5                               | B 4.2                                       | 24<br>0.94     | 12<br>0.47           | 10<br>0.39     | 16<br>0.63     | 5<br>0.20      | 4   | 11<br>0.43 |
| M 12 x 1.5                               | B 5.2                                       | 24<br>0.94     | 12<br>0.47           | 10<br>0.39     | 16<br>0.63     | 5<br>0.20      | 4   | 11<br>0.43 |
| M 12 x 1.5                               | B 6.2                                       | 24<br>0.94     | 12<br>0.47           | 10<br>0.39     | 16<br>0.63     | 5<br>0.20      | 4   | 11<br>0.43 |
| M 16 x 1.5                               | B 8.2                                       | 32<br>1.26     | 16<br>0.63           | 12<br>0.47     | 20<br>0.79     | 7<br>0.28      | 6   | 13<br>0.51 |
| M 16 x 1.5                               | B 10.2                                      | 32<br>1.26     | 16<br>0.63           | 12<br>0.47     | 20<br>0.79     | 7<br>0.28      | 6   | 13<br>0.51 |
| M 16 x 1.5                               | B 12.2                                      | 32<br>1.26     | 16<br>0.63           | 12<br>0.47     | 20<br>0.79     | 7<br>0.28      | 6   | 13<br>0.51 |

**Specification**

- **GN 412.3**  
Bushings  
Steel  
- Hardened  
- Blackened finish
- **GN 412.5**  
Bushings  
Stainless steel AISI 431  
Hardened

• *Stainless Steel Characteristics* → page 2143  
• RoHS compliant

**Information**

GN 412.3 and GN 412.5 locating bushings with tapered flange are used in connection with the pins of indexing plungers and cam action indexing plungers.

These bushings were manufactured so they can also be utilized as mating plunger pin receptacles when assembled into GN 412.1 or GN 612.1 mounting blocks.

|  |                                 |
|--|---------------------------------|
| <b>How to order (Steel)</b><br><sup>1</sup> <sup>2</sup><br><b>GN 412.3-M12X1.5-B4.2</b>           | 1 Thread d <sub>1</sub>         |
|  | 2 Inner diameter d <sub>2</sub> |
| <b>How to order (Stainless steel)</b><br><sup>1</sup> <sup>2</sup><br><b>GN 412.5-M16x1.5-B8.2</b> | 1 Thread d <sub>1</sub>         |
|  | 2 Inner diameter d <sub>2</sub> |

3.1  
3.2  
3.3  
3.4  
3.5  
3.6  
3.7  
3.8  
3.9  
3.10

