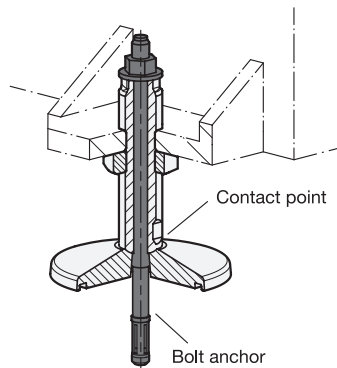


Application example



Metric

**4 Type (Base plate)**

- A Without rubber pad
- B With rubber pad
- C With O-ring

**Metric table**

1 d <sub>1</sub>	2 d <sub>2</sub> Thread	3 l <sub>1</sub>	d <sub>3</sub> H13	l <sub>2</sub> ≈	l <sub>3</sub>	s	A/F <sub>1</sub>	A/F <sub>2</sub>	Dimensions in: millimeters - inches	
									Static load Type A / C	Type B
80 3.15	M 20 x 1.5	60 2.36	9 0.35	27.5 1.08	15 0.59	3 0.12	16	16	40 kN 8992 lbf	20 kN 4496 lbf
100 3.94	M 24 x 2	70 2.76	11 0.43	30 1.18	17.5 0.69	4 0.16	19	19	50 kN 11240 lbf	30 kN 6744 lbf
125 4.92	M 30 x 2	90 3.54	13.5 0.53	38 1.50	21 0.83	5 0.20	24	24	80 kN 17985 lbf	50 kN 11240 lbf
160 6.30	M 36 x 2	110 4.33	17.5 0.69	45 1.77	27 1.06	6 0.24	30	30	120 kN 26977 lbf	70 kN 15737 lbf
200 7.87	M 42 x 2	125 4.92	22 0.87	55 2.17	33 1.30	8 0.31	36	36	150 kN 33721 lbf	110 kN 24729 lbf

**Specification**

- Base  
Steel  
Powder coated  
Black, RAL 9005, textured finish
- Threaded stud / hex nut ISO 8675  
Steel, zinc plated, blue passivated finish
- Rubber pad inlay  
Black, NBR  
85 ±5 shore A
- O-ring inlay  
Black, NBR  
≈ 70 shore A
- ISO Fundamental Tolerances → page 2129
- Elastomer Characteristics → page 2135
- RoHS compliant

**Information**

GN 37 machine feet are characterized by their solid construction and large variety. They are used especially on heavy application and large machines. The through hole allows the machine feet to be attached centrally to the ground, making them ideal for compressive and tensile loads.

Base plate and threaded stud are not connected to each other; during setup they are automatically centered by the radius at the contact point.

Type B with rubber pad prevents lateral slipping, protects delicate surfaces and dampens vibrations and shocks. With type C, the mounting hole is sealed by an O-ring in the base plate on the ground. When used in conjunction with a collecting tray, it prevents for example the leakage of lubricants to reach the underlying surface.

How to order	1 Base diameter d <sub>1</sub>
	2 Thread d <sub>2</sub>
	3 Stud length l <sub>1</sub>
	4 Type (Base plate)

1 2 3 4  
**GN 37-100-M24X2-70-C**