

**GN 322**

Plain, Rim Highly Polished

**GN 324**

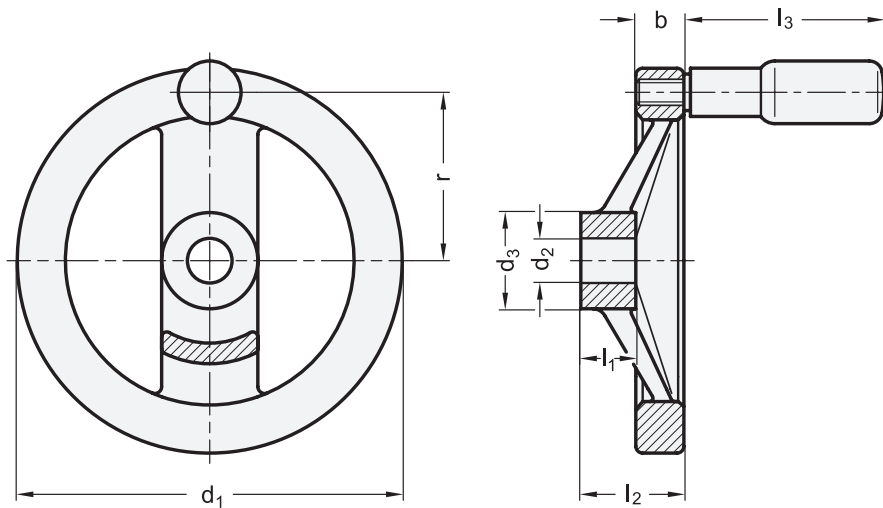
Black Powder Coated

**Two Spoked Handwheels**

Aluminum, with or without Revolving Handle

**JW WINCO®**

A Ganter Company

**2 Bore code****B** Without keyway**4 Type****A** Without handle**R** With revolving handle**Specification**

- Aluminum
  - Contact face of hub machined
  - Rim turned
- Radial and axial runout of the rim < 0.4 mm
- **GN 322**
  - Rim highly polished on all sides
  - Unmachined wheel body, shot-blasted finish
- **GN 324**
  - Wheel body
    - Completely powder coated
    - Black, matte textured finish
- Stepped cylindrical revolving handle GN 798
  - Plastic
  - Technopolymer
    - Black, matte finish
    - Threaded spindle
    - Steel, zinc plated, blue passivated finish
- *Keyways WN / DIN 6885*
- *Cross Holes GN 110*
- *ISO Fundamental Tolerances*
- **RoHS compliant**

**On request**

- Other modifications such as special inch and metric bores, keyways, set screw holes, etc.

**Information**

GN 322 two spoked handwheels are distinguished by modern design. The highly polished rim and the shot blasted finish do not, for most applications, require painting or other surface treatments.

GN 324 two spoked handwheels have the same dimensions as GN 322. The textured finish provides a clean, durable, modern look and feel.

For both series, there is no mounting hole in rim for handwheel without handle. Handle shipped loose; mounting of handle is required.

**see also...**

- *Safety Handwheels (Disengage the Clutch)*
- *Countersunk Washers GN 184 (for Axial Fixing)*
- *Flat-Faced Spoked Handwheels GN 924 (Aluminum, with or without Revolving Handle)*

How to order (Inch, plain, rim highly polished)

**GN 322-200-B3/4-R**

- |   |                          |
|---|--------------------------|
| 1 | Handwheel diameter $d_1$ |
| 2 | Bore code                |
| 3 | Bore diameter $d_2$      |
| 4 | Type                     |

How to order (Metric, black, powder coated)

**GN 324-200-B18-R**

- |   |                          |
|---|--------------------------|
| 1 | Handwheel diameter $d_1$ |
| 2 | Bore code                |
| 3 | Bore diameter $d_2$      |
| 4 | Type                     |

**Inch table**

1

3

Dimensions in: inches - *millimeters*

d <sub>1</sub>	d <sub>2</sub> +0.001 Bore		GN 324		d <sub>3</sub>	b	l <sub>1</sub>	l <sub>2</sub>	l <sub>3</sub>	r	Ø Handle GN 798
	GN 322										
4.92 125	1/2	-	1/2	-	1.22 31	0.59 15	0.71 18	1.30 33	2.42 61.5	2.13 54	0.87 22
5.51 140	5/8	-	5/8	-	1.42 36	0.65 16.5	0.75 19	1.42 36	3.01 76.5	2.40 61	0.94 24
6.30 160	1/2	5/8	1/2	-	1.42 36	0.71 18	0.79 20	1.54 39	3.01 76.5	2.80 71	0.94 24
7.87 200	5/8	3/4	5/8	3/4	1.65 42	0.81 20.5	0.94 24	1.77 45	3.41 86.5	3.50 89	0.98 25
9.84 250	3/4	-	7/8	-	1.89 48	0.91 23	1.10 28	2.01 51	3.41 86.5	4.45 113	0.98 25

**Metric table**

1

3

Dimensions in: millimeters - *inches*

d <sub>1</sub>	d <sub>2</sub> H7 Bore		d <sub>3</sub>	b	l <sub>1</sub>	l <sub>2</sub>	l <sub>3</sub>	r	Ø Handle GN 798
125 4.92	12	14	31 1.22	15 0.59	18 0.71	33 1.30	61.5 2.42	54 2.13	22 0.87
140 5.51	14	16	36 1.42	16.5 0.65	19 0.75	36 1.42	76.5 3.01	61 2.40	24 0.94
160 6.30	14	16	36 1.42	18 0.71	20 0.79	39 1.54	76.5 3.01	71 2.80	24 0.94
200 7.87	18	20	42 1.65	20.5 0.81	24 0.94	45 1.77	86.5 3.41	89 3.50	25 0.98
250 9.84	22	26	48 1.89	23 0.91	28 1.10	51 2.01	86.5 3.41	113 4.45	25 0.98