

2 Type

- A With straight latch arm
- B With off-set latch arm

3 Version

- SL Lockable by counter-clockwise turn
- SR Lockable by clockwise turn
- OS Without lock, latch arm 90° rotatable

Metric table



Dimensions in: millimeters - inches

d ₁	a ₁ Type A	a ₂ Type B	b	d ₂	h ₁	h ₂	l ₁ ±0.5 Type A	l ₂ ±0.5 Type B
40 1.57	50 1.97	48 1.89	20 0.79	29 1.14	25 0.98	11 0.43	10 0.39	18 0.71

Specification

- Star knob
Plastic
Technopolymer (Polypropylene PP)
- Black, matte finish
- Temperature resistant up to 194 °F (90 °C)
- Latch arm
Straight / off-set
Steel sheet metal, zinc plated
- Key
Brass, nickel plated
- Assembly hardware
Steel, zinc plated, brass or stainless steel
- *Plastic Characteristics* → page QVX
- *RoHS compliant*

Information

For EN 217 cam locks, two keys are supplied with each cam lock. Cam locks are available in more than 480 variations, whose keys are marked with specific numbers.

The key may be inserted or withdrawn in both the locked and unlocked positions.

see also...

- *List of Cam Latch Types* → page QVX
- *Cam Locks GN 115* → page QVX
- *Cam Latches GN 115 (with Operating Elements)* → page QVX

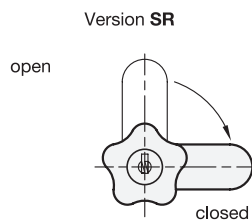
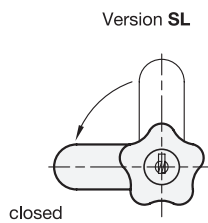
On request

- Cam locks keyed alike
- Cam locks keyed differently

How to order EN 217-40-A-SR	1 Diameter d ₁
	2 Type
	3 Version

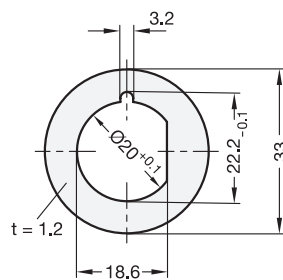
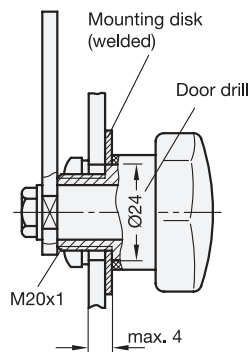
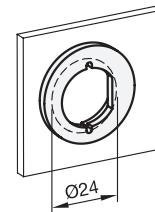


Construction and assembly instructions



Construction examples

with mounting disk



Location hole directly incorporated

