

**SS** Stainless Steel

**1 Type**

- Operation with
- DK** triangular spindle (DK6.5)
- VK** square spindle (VK6)
- SCH** slot
- SK** wing knob (only GN 115.1)
- SCK** wing knob, with key (only GN 115.1)

**Metric table**



Dimensions in: millimeters - inches

Latch distance <b>A</b>		
7.5	13.5	19.5
0.30	0.53	0.77

**Specification**

- **GN 115.1**
  - Cam latch housing  
Zinc die-cast, chrome plated finish
  - Latch arm / assembly hardware  
Steel, zinc plated, blue passivated finish
  - Wing knob (Type SK and SCK)  
Zinc die-cast  
Powder coated  
Black, textured finish
  - Key  
Nickel silver with plastic hand piece
- **GN 115.6**
  - Cam latch housing  
Stainless steel  
European Standard No. 1.4305 (AISI 303)
  - Latch arm / assembly hardware  
Stainless steel  
European Standard No. 1.4301 (AISI 304)
- Protection class IP 65  
due to housing gasket and O-ring
- **RoHS compliant**

**Accessory**

- Socket keys GN 119.2
- Protective caps GN 120

**Information**

GN 115.1 / GN 115.6 mini cam latches / cam locks have smaller dimensions than GN 115, and are ideal for small doors and flaps.

They close via a turning operation limited to 90° (quarter of a turn), which moves the latch behind the door frame. The beveled edges of the latch arm create a smooth latching of the door.

The 3 different off-set latch arm options allow for "Latch Distance A" to be set between 7.5 mm and 19.5 mm.

For type SCK, two keys are supplied with each cam lock. The key may be inserted or withdrawn in both the locked and unlocked positions. Cam lock types are keyed alike and can be operated with the identical key.

Product comes supplied with a loosely enclosed latch arm.

The socket key latches the latch arm and provides security from accidentally opening but does not lock the arm in place.

A socket key is not included.

see also...

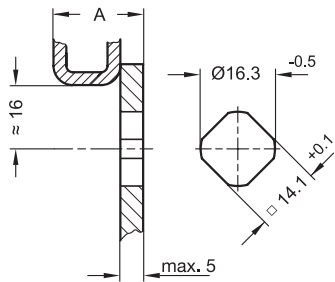
- *List of Cam Latch Types*

<b>How to order (Zinc die-cast)</b>	<b>1 Type</b>
<b>GN 115.1-DK-13.5</b>	<b>2 Latch distance A</b>

<b>How to order (Stainless steel)</b>	<b>1 Type</b>
<b>GN 115.6-VK-19.5</b>	<b>2 Latch distance A</b>



### Construction and assembly instructions



For installation, create a bore in the door as shown in the outline drawing.

Once assembled, the cam latch is inserted through the bore from the front. The hexagon jam nut can then be placed over the latch arm and onto the threaded housing and fastened in place.

The installation bore in the door leaf is usually generated by punching or laser machining during a mass production run.

For small production runs and steel sheets below 2 mm thickness, GN 123 sheet metal punches are the tool of choice.

The installation bore can also be created by drilling / milling as shown in the outline drawings.

